

470 P

Excavator



JOHN DEERE



470 P-TIER EXCAVATOR



MEET YOUR NEXT EXCAVATOR.

Wondering what's in store for your operation? With its smooth, one-of-a-kind efficiency, the 470 P-Tier Excavator can be just what you've had in mind. Customer-inspired standards include a fuel-shutoff valve for clean filter changes, a control pattern-change valve that eases operation, and a camera array with LED-surround lighting to see your jobsites like never before. Factory-installed options such as hydraulic single-pedal propel system, a heated/cooled leather seat, and flexible grade-management solutions — including fully integrated SmartGrade™ — are designed to further exceed your expectations.

FEATURES



Seeing is believing

Standard camera array with LED-surround lighting integrated into the main monitor work together to supplement 270-degree visibility of the area around the machine.

Control pattern

Designed to accommodate multiple operators with the simple flip of a lever, control pattern-change valve is standard instead of a field-kit option.

Fuel shutoff

Standard fuel-shutoff valve improves cleanliness when replacing fuel filters compared to previous models.

Keep it clean

Standard hydraulic reversing fan keeps coolers clean in high-debris environments. Optional debris package includes factory-installed engine-air precleaner, a must-have in harsh working conditions.

Move forward

Optional hydraulic single-pedal propel system enables simplified straight-line machine tracking without the need to engage both foot pedals or both hand levers.



OPTIONAL HYDRAULIC
SINGLE-PEDAL
PROPEL SYSTEM SIMPLIFIES
MACHINE TRACKING

It's smart to get good grades

John Deere offers an economical way to adopt grade-management technology. Whether you're new to the game or want our most cutting-edge tech, there's a solution that will fit your needs. Choose 2D or 3D Excavator Grade Guidance or opt for fully integrated SmartGrade for 3D control including overdig protection and in-cab real-time distance to target. All grade-management solutions are factory ready and backed by your Deere dealer, including service, warranty, and financing.

Deere grade-control solutions help reduce labor, improve accuracy, enhance speed, and save on material compared to excavators without grade-management technology. And they help operators of all experience levels to achieve excellent results.

Grade Guidance

Grade Guidance arms operators with elevation and position of bucket cutting edge relative to target plane (2D) or design surface (3D). This economical offering is perfect for precision excavation projects, including digging trenches for pipes, shaping ditches or slopes, or excavating structure foundations. And since it doesn't require GPS access, it's a reliable system for areas where GPS reception is poor.

Take control

Ergonomically correct short-throw pilot levers provide smooth, predictable fingertip control with less movement or effort. Grade-control functions are integrated into the factory pilot levers for easy operation.

Go with the flow

Push buttons in the right lever enable fingertip control of auxiliary hydraulic flow* for operating attachments.

*Grade management not available with auxiliary hydraulics.



470 P-TIER EXCAVATOR



GOGRADE.DEERE.COM
PROVIDES MOBILE-FRIENDLY
SETUP & OPERATION

Precision Construction

This suite of construction technology delivers **Productivity Solutions** to help you get more done, more efficiently. In-base JDLINK™ connectivity provides machine location, utilization data, and alerts to help you maximize productivity and efficiency. To maximize uptime and lower costs, JDLINK also enables **John Deere Connected Support™**. Dealers use Expert Alerts based on data from thousands of connected machines to proactively address conditions that may otherwise likely lead to downtime. Your dealer can also monitor machine health and leverage remote diagnostics and programming capability to further diagnose problems and even update machine software without a time-consuming trip to the jobsite.*

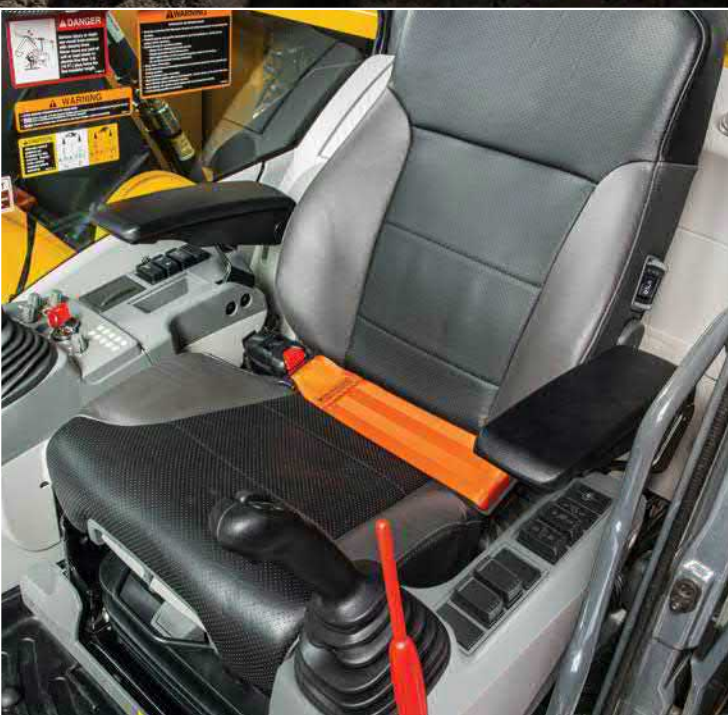
Pivotal development

Bucket-to-arm pivot joint features a new heat-treated pin and flanged bushing made of forged steel, to double joint life in sandy digging conditions. High-strength floating-pin design extends pin-case hardening depth by 175 percent, boosting wear life and easing serviceability.

Stress management

Thick-plate single-sheet mainframe, box-section track frames, and double-seal swing bearing deliver rock-solid durability. Three welded bulkheads within the boom resist torsional stress.

*Availability varies by region. Options not available in every country.





While general information, pictures, and descriptions are provided, some illustrations and text may include product options and accessories NOT AVAILABLE in all regions, and in some countries products and accessories may require modifications or additions to ensure compliance with the local regulations of those countries.

Engine		470 P-TIER	
Manufacturer and Model	John Deere PowerTech™ PSS 6135		
Non-Road Emission Standard	EPA Final Tier 4/EU Stage IV		
Net Rated Power (ISO 9249)	274 kW (367 hp) at 2,000 rpm		
Cylinders	6		
Displacement	13.5 L (824 cu. in.)		
Off-Level Capacity	70% (35 deg.)		
Aspiration	Turbocharged, air-to-air charge-air cooler		
Cooling		Cool-on-demand, hydraulic-driven, suction-type fan with remote-mounted drive	
Powertrain		2-speed propel with AutoShift	
Maximum Travel Speed			
Low	3.9 km/h (2.4 mph)		
High	5.5 km/h (3.4 mph)		
Drawbar Pull	33 537 kg (73,937 lb.)		
Hydraulics		Open center, load sensing	
Main Pumps		2 variable-displacement pumps	
Maximum Rated Flow	400 L/m (106 gpm) x 2		
Pilot Pump		1 gear	
Maximum Rated Flow	34 L/m (8.9 gpm)		
Pressure Setting	3900 kPa (566 psi)		
System Operating Pressure			
Circuits			
Implement	31 900 kPa (4,627 psi)		
Travel	35 300 kPa (5,120 psi)		
Swing	28 400 kPa (4,119 psi)		
Power Boost	35 300 kPa (5,120 psi)		
Controls		Pilot levers, short stroke, low-effort hydraulic pilot controls with shutoff lever	
Cylinders		Heat-treated, chrome-plated, polished cylinder rods; hardened steel (replaceable bushings) pivot pins	
	<i>Bore</i>	<i>Rod Diameter</i>	<i>Stroke</i>
Boom (2)	170 mm (6.7 in.)	115 mm (4.5 in.)	1590 mm (62.6 in.)
Arm (1)	190 mm (7.5 in.)	130 mm (5.1 in.)	1940 mm (76.4 in.)
Bucket (1)	170 mm (6.7 in.)	120 mm (4.7 in.)	1325 mm (52.2 in.)
Electrical			
Number of Batteries (12 volt)	2		
Battery Capacity	1,400 CCA		
Alternator Rating	100 amp		
Work Lights	9 LED: 1 mounted on frame, 2 mounted on boom, 2 mounted on top of cab, 1 rear-facing top of cab, 1 mounted on counter-weight, 1 mounted on left-side handrail, and 1 mounted on right-side handrail		
Undercarriage		Planetary final drives with axial-piston motors	
Rollers (each side)			
Carrier	3		
Track	9		
Shoes, Triple Semi-Grousers (each side)	53		
Track			
Adjustment	Hydraulic		
Guides	Front and center		
Chain	Sealed and lubricated		

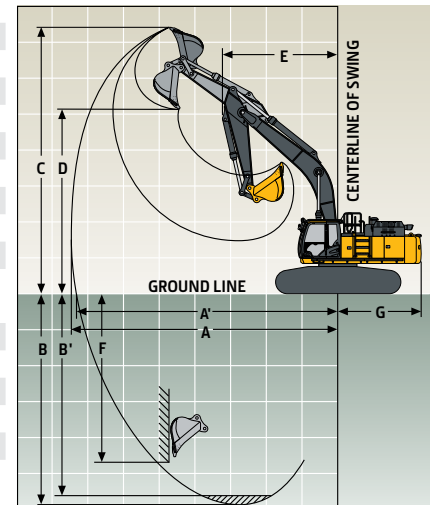
470 P-TIER EXCAVATOR SPECIFICATIONS

470

P

While general information, pictures, and descriptions are provided, some illustrations and text may include product options and accessories NOT AVAILABLE in all regions, and in some countries products and accessories may require modifications or additions to ensure compliance with the local regulations of those countries.

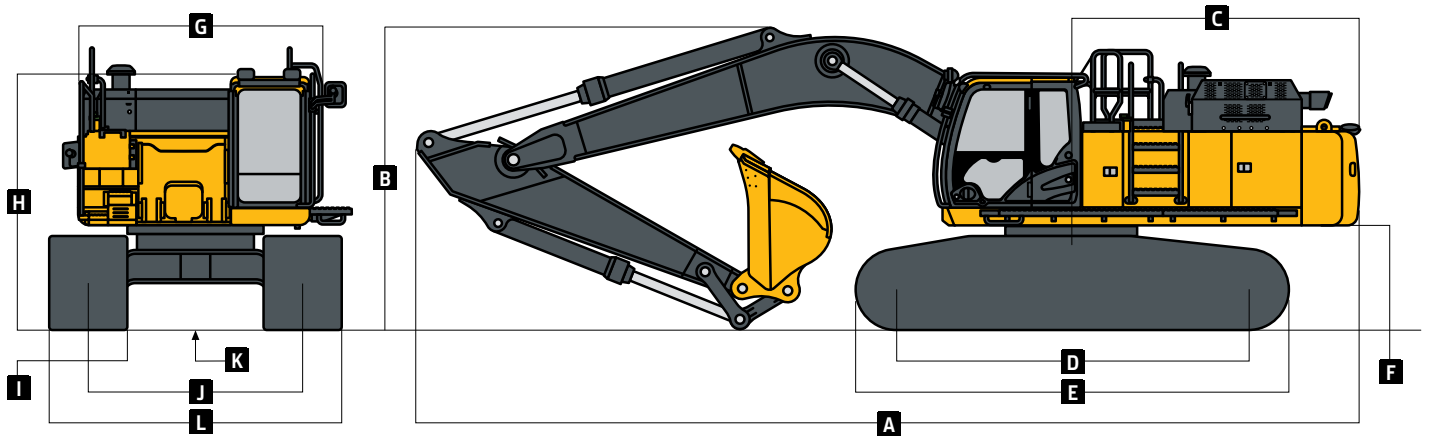
Ground Pressure		470 P-TIER	
900-mm (36 in.) Triple Semi-Grouser Shoes		61.3 kPa (8.9 psi)	
Swing Mechanism			
Speed	9.5 rpm		
Torque	148 000 Nm (109,159 lb.-ft.)		
Serviceability			
Refill Capacities		Refill Capacities (continued)	
Fuel Tank	675 L (178 gal.)	Gearbox	
Cooling System	62.3 L (16.5 gal.)	Swing (each)	6.5 L (1.7 gal.)
Engine Oil With Filter	44 L (12 gal.)	Travel (each)	11 L (2.9 gal.)
Hydraulic Tank	310 L (82 gal.)	Diesel Exhaust Fluid (DEF) Tank	71 L (18.8 gal.)
Hydraulic System	510 L (135 gal.)		
Operating Weights			
With Full Fuel Tank; 79-kg (175 lb.) Operator; 2.34-m ³ (3.06 cu. yd.), 1370-mm (54 in.), 2031-kg (4,478 lb.) Bucket; 3.9-m (12 ft. 10 in.) Arm; 8400-kg (18,519 lb.) Counterweight With Removal Device; and 900-mm (36 in.) Triple Semi-Grouser Shoes			
Operating Weight	51 218 kg (112,916 lb.)		
Component Weights		Component Weights (continued)	
Undercarriage With 900-mm (36 in.) Triple Semi-Grouser Shoes	18 978 kg (41,839 lb.)	Arm With Bucket Cylinder and Linkage (continued)	
7.0-m (23 ft. 0 in.) 1-Piece Boom (with arm cylinder)	4499 kg (9,919 lb.)	3.9 m (12 ft. 10 in.)	2640 kg (5,820 lb.)
Arm With Bucket Cylinder and Linkage		Boom-Lift Cylinders (2), Total Weight	840 kg (1,853 lb.)
3.4 m (11 ft. 2 in.)	2539 kg (5,598 lb.)		
Operating Dimensions			
Arm Length	3.4 m (11 ft. 2 in.)	3.9 m (12 ft. 10 in.)	
Arm Digging Force			
SAE	219 kN (49,199 lb.)	199 kN (44,783 lb.)	
ISO	226 kN (50,801 lb.)	204 kN (45,925 lb.)	
Bucket Digging Force			
SAE	269 kN (60,477 lb.)	269 kN (60,477 lb.)	
ISO	301 kN (67,564 lb.)	301 kN (67,564 lb.)	
A Maximum Reach	12.06 m (39 ft. 7 in.)	12.49 m (41 ft. 0 in.)	
A ⁱ Maximum Reach at Ground Level	11.84 m (38 ft. 10 in.)	12.28 m (40 ft. 3 in.)	
B Maximum Digging Depth	7.77 m (25 ft. 6 in.)	8.27 m (27 ft. 2 in.)	
B ⁱ Maximum Digging Depth at 2.44-m (8 ft. 0 in.) Flat Bottom	7.63 m (25 ft. 0 in.)	8.14 m (26 ft. 8 in.)	
C Maximum Cutting Height	11.06 m (36 ft. 3 in.)	11.16 m (36 ft. 7 in.)	
D Maximum Dumping Height	7.65 m (25 ft. 1 in.)	7.77 m (25 ft. 6 in.)	
E Minimum Swing Radius	4.84 m (15 ft. 11 in.)	4.81 m (15 ft. 9 in.)	
F Maximum Vertical Wall	6.59 m (21 ft. 7 in.)	6.98 m (22 ft. 11 in.)	
G Tail-Swing Radius	3.67 m (12 ft. 0 in.)	3.67 m (12 ft. 0 in.)	



470 P-TIER

While general information, pictures, and descriptions are provided, some illustrations and text may include product options and accessories NOT AVAILABLE in all regions, and in some countries products and accessories may require modifications or additions to ensure compliance with the local regulations of those countries.

Machine Dimensions	470 P-TIER	
Arm Length	3.4 m (11 ft. 2 in.)	3.9 m (12 ft. 10 in.)
A Overall Length With Arm	12.01 m (39 ft. 5 in.)	12.01 m (39 ft. 5 in.)
B Overall Height With Arm	3.48 m (11 ft. 5 in.)	3.50 m (11 ft. 6 in.)
C Rear-End Length/Swing Radius	3.67 m (12 ft. 0 in.)	3.67 m (12 ft. 0 in.)
D Distance Between Idler/Sprocket Centerline	4.47 m (14 ft. 8 in.)	4.47 m (14 ft. 8 in.)
E Undercarriage Length	5.47 m (17 ft. 11 in.)	5.47 m (17 ft. 11 in.)
F Counterweight Clearance	1.36 m (4 ft. 6 in.)	1.36 m (4 ft. 6 in.)
G Upperstructure Width	3.48 m (11 ft. 5 in.)	3.48 m (11 ft. 5 in.)
H Cab Height	3.33 m (10 ft. 11 in.)	3.33 m (10 ft. 11 in.)
I Track Width With Triple Semi-Grouser Shoes	900 mm (36 in.)	900 mm (36 in.)
J Gauge Width		
Operating Position	2.89 m (9 ft. 6 in.)	2.89 m (9 ft. 6 in.)
Transport Position	2.39 m (7 ft. 10 in.)	2.39 m (7 ft. 10 in.)
K Ground Clearance	0.74 m (29 in.)	0.74 m (29 in.)
L Overall Width With 900-mm (36 in.) Triple Semi-Grouser Shoes		
Operating Position	3.79 m (12 ft. 5 in.)	3.79 m (12 ft. 5 in.)
Transport Position	3.29 m (10 ft. 10 in.)	3.29 m (10 ft. 10 in.)



While general information, pictures, and descriptions are provided, some illustrations and text may include product options and accessories NOT AVAILABLE in all regions, and in some countries products and accessories may require modifications or additions to ensure compliance with the local regulations of those countries.

470 P-TIER

Lift Capacities 470 P-TIER

Boldface type indicates hydraulically limited capacity; lightface type indicates stability-limited capacities, in kg (lb.). Ratings at bucket lift hook; machine equipped with standard gauge and situated on firm, uniform supporting surface. Total load includes weight of cables, hook, etc. Figures do not exceed 87 percent of hydraulic capacities or 75 percent of weight needed to tip machine. All lift capacities are based on ISO 10567 (with power boost).

LOAD POINT HEIGHT	HORIZONTAL DISTANCE FROM CENTERLINE OF ROTATION									
	3.0 m (10 ft.)		4.5 m (15 ft.)		6.0 m (20 ft.)		7.5 m (25 ft.)		9.0 m (30 ft.)	
	Over Front	Over Side	Over Front	Over Side	Over Front	Over Side	Over Front	Over Side	Over Front	Over Side
<i>With 7.0-m (23 ft. 0 in.) boom, 3.4-m (11 ft. 2 in.) arm, and 900-mm (36 in.) triple semi-grouser shoes, less bucket</i>										
7.5 m (25 ft.)							11 640 (25,540)	11 640 (25,210)		
6.0 m (20 ft.)							12 260 (26,730)	11 460 (24,700)	10 910 (21,510)	8540 (18,350)
4.5 m (15 ft.)			20 770 (44,540)	20 770 (44,540)	15 810 (34,180)	15 420 (33,290)	13 310 (28,920)	11 050 (23,830)	11 870 (25,910)	8360 (17,990)
3.0 m (10 ft.)			23 750 (54,320)	21 920 (47,350)	18 000 (38,910)	14 530 (31,390)	14 490 (31,430)	10 580 (22,840)	12 460 (27,110)	8110 (17,480)
1.5 m (5 ft.)			15 460 (37,020)	15 460 (37,020)	19 620 (42,470)	13 840 (29,870)	15 460 (33,520)	10 170 (21,960)	12 600 (27,150)	7880 (17,000)
Ground Line			18 500 (42,980)	18 500 (42,980)	20 280 (43,950)	13 430 (28,970)	15 950 (34,590)	9890 (21,340)	12 420 (26,760)	7720 (16,650)
-1.5 m (-5 ft.)	13 570 (30,700)	13 570 (30,700)	25 530 (56,570)	20 440 (43,950)	19 920 (43,190)	13 280 (28,640)	15 770 (34,150)	9760 (21,070)	12 350 (26,650)	7660 (16,550)
-3.0 m (-10 ft.)	22 020 (49,800)	22 020 (49,800)	23 620 (51,250)	20 640 (44,390)	18 490 (40,020)	13 340 (28,770)	14 630 (31,510)	9800 (21,160)		
-4.5 m (-15 ft.)	24 600 (53,120)	24 600 (53,120)	19 710 (42,450)	19 710 (42,450)	15 580 (33,380)	13 620 (29,400)	11 570 (25,400)	10 080		
<i>With 7.0-m (23 ft. 0 in.) boom, 3.9-m (12 ft. 10 in.) arm, and 900-mm (36 in.) triple semi-grouser shoes, less bucket</i>										
7.5 m (25 ft.)									7570	7570
6.0 m (20 ft.)							11 520 (25,120)	11 520 (24,930)	10 660 (22,170)	8610 (18,510)
4.5 m (15 ft.)					14 830 (32,070)	14 830 (32,070)	12 630 (27,450)	11 120 (23,990)	11 330 (24,710)	8380 (18,050)
3.0 m (10 ft.)			23 650 (50,850)	22 360 (48,280)	17 130 (37,030)	14 670 (31,680)	13 900 (30,140)	10 620 (22,910)	12 000 (26,110)	8110 (17,470)
1.5 m (5 ft.)			20 270 (48,150)	20 270 (45,110)	18 990 (41,100)	13 880 (29,950)	15 000 (32,530)	10 160 (21,920)	12 570 (27,080)	7840 (16,900)
Ground Line			20 200 (46,810)	20 200 (43,730)	19 970 (43,280)	13 370 (28,830)	15 690 (34,010)	9820 (21,190)	12 340 (26,600)	7640 (16,470)
-1.5 m (-5 ft.)	13 570 (30,620)	13 570 (30,620)	25 040 (57,490)	20 180 (43,390)	19 960 (43,280)	13 130 (28,310)	15 750 (34,120)	9640 (20,790)	12 230 (26,360)	7530 (16,250)
-3.0 m (-10 ft.)	20 270 (45,750)	20 270 (45,750)	24 590 (53,320)	20 300 (43,660)	18 930 (40,970)	13 130 (28,300)	14 980 (32,330)	9620 (20,760)	11 780 (25,760)	7570
-4.5 m (-15 ft.)	27 700 (59,840)	27 700 (59,840)	21 220 (45,780)	20 660 (44,460)	16 590 (35,680)	13 330 (28,770)	12 840 (27,300)	9800 (21,200)		
-6.0 m (-20 ft.)			15 600 (32,950)	15 600 (32,950)	11 870 (24,560)	11 870 (24,560)				

470 P-TIER

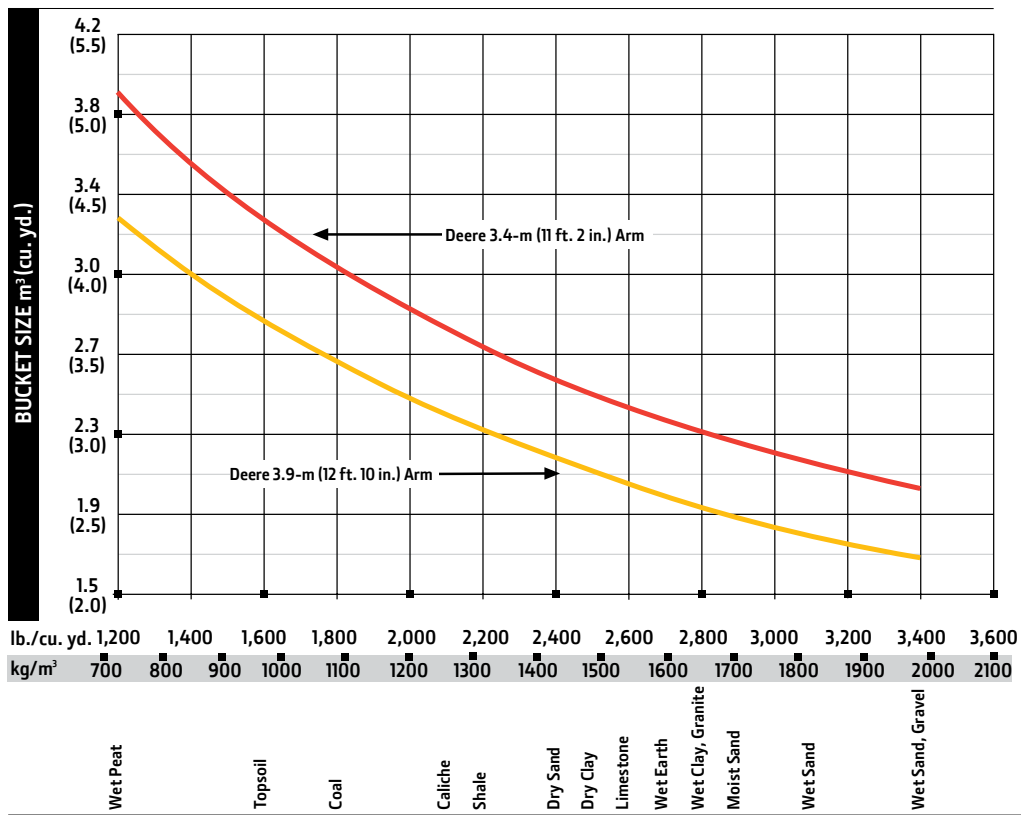
While general information, pictures, and descriptions are provided, some illustrations and text may include product options and accessories NOT AVAILABLE in all regions, and in some countries products and accessories may require modifications or additions to ensure compliance with the local regulations of those countries.

Buckets 470 P-TIER

A full line of buckets is offered to meet a wide variety of applications. Digging forces are with power boost. Buckets are equipped with John Deere TK-Series teeth. A variety of teeth are available through John Deere Parts. Optional side cutters add 150 mm (6 in.) to bucket widths. Capacities are SAE heaped ratings.

Type Bucket	Bucket Width		Bucket Capacity		Bucket Weight		Bucket Dig Force (SAE)		Bucket Dig Force (ISO)		Arm Dig Force 3.4 m (11 ft. 2 in.)				Arm Dig Force 3.9 m (12 ft. 10 in.)				Bucket Pin to Cutting-Edge Radius		Bucket Pin to Tooth-Tip Radius		Number of Teeth
	mm	in.	m ³	cu. yd.	kg	lb.	kN	lb.	kN	lb.	kN	lb.	kN	lb.	kN	lb.	kN	lb.	mm	in.	mm	in.	
Heavy Duty	1067	42.0	1.47	1.92	1629	3,591	269.0	60,477	300.5	67,564	218.8	49,199	226.0	50,801	199.2	44,783	204.3	45,925	1675	66	1849	72.8	4
	1220	48.0	1.74	2.27	1803	3,975	269.0	60,477	300.5	67,564	218.8	49,199	226.0	50,801	199.2	44,783	204.3	45,925	1675	66	1849	72.8	5
	1372	54.0	2.01	2.60	1924	4,242	269.0	60,477	300.5	67,564	218.8	49,199	226.0	50,801	199.2	44,783	204.3	45,925	1675	66	1849	72.8	5
	1524	60.0	2.28	3.00	2090	4,608	269.0	60,477	300.5	67,564	218.8	49,199	226.0	50,801	199.2	44,783	204.3	45,925	1675	66	1849	72.8	6
	1676	66.0	2.55	3.34	2195	4,839	269.0	60,477	300.5	67,564	218.8	49,199	226.0	50,801	199.2	44,783	204.3	45,925	1675	66	1849	72.8	6
	1829	72.0	2.82	3.70	2360	5,203	269.0	60,477	300.5	67,564	218.8	49,199	226.0	50,801	199.2	44,783	204.3	45,925	1675	66	1849	72.8	7
Severe Duty	1537	60.5	2.28	3.00	2222	4,899	262.9	59,102	293.7	66,028	217.1	48,800	224.1	50,389	197.7	44,451	202.8	45,584	1675	66	1892	74.5	5

Bucket Selection Guide*



* Contact your John Deere dealer for optimum bucket and attachment selections. These recommendations are for general conditions and average use. Does not include optional equipment such as thumbs or couplers. Larger buckets may be possible when using light materials, for flat and level operations, less compacted materials, and volume loading applications such as mass-excavation applications in ideal conditions. Smaller buckets are recommended for adverse conditions such as off-level applications, rocks, and uneven surfaces. Bucket capacity indicated is SAE heaped.

Additional equipment

Key: ● Standard ▲ Optional or special
See your John Deere dealer for further information.

470 P Engine

- Auto-idle system
- Automatic belt-tension device
- Batteries (2 – 12 volt)
- Coolant recovery tank
- Dual-element dry-type air filter
- Electronic engine control
- Enclosed fan guard (conforms to SAE J1308)
- Engine coolant to –37 deg. C (–34 deg. F)
- Programmable auto shutdown
- Fuel filter with water separator
- Fuel shutoff valve
- Full-flow oil filter
- Turbocharger with charge air cooler
- Cool-on-demand hydraulic-reversing fan
- 500-hour engine-oil-change interval
- 70% (35 deg.) off-level capability

Hydraulic System

- Reduced-drift valve for boom down, arm in
- Auxiliary hydraulic valve section
- Spring-applied, hydraulically released automatic swing brake
- Auxiliary hydraulic-flow adjustments through monitor
- Auto power lift
- 4,000-hour hydraulic-oil-change interval
- Control pattern-change valve
- ▲ Auxiliary hydraulic lines
- ▲ Auxiliary pilot and electric controls
- ▲ Hydraulic filter restriction indicator kit
- ▲ Load-lowering control device
- ▲ Single-pedal propel control

Undercarriage

- Planetary drive with axial piston motors
- Propel motor shields
- Spring-applied, hydraulically released automatic propel brake
- Track guides, front idler and center
- 2-speed propel with automatic shift
- Upper carrier rollers (3)
- Sealed and lubricated track chain
- Track-frame undercover seat screws
- ▲ Track-frame undercover
- ▲ Triple semi-grouser shoes, 900 mm (36 in.)

Upperstructure

- Right-hand and left-hand mirrors
- Vandal locks with ignition key: Cab door / Fuel cap / Service doors / Toolbox
- Debris screen in side panel
- Service platform, left side
- Remote-mounted engine oil and fuel filters
- ▲ Counterweight-removal system

470 P Front Attachments

- ▲ Hydraulic coupler ready
- Centralized lubrication system
- Dirt seals on all bucket pins
- ▲ Boom, 7.0 m (23 ft. 0 in.)
- ▲ Arm, 3.4 m (11 ft. 2 in.)
- ▲ Arm, 3.9 m (12 ft. 10 in.)
- ▲ Buckets: Heavy duty / Heavy-duty high capacity / Side cutters and teeth

Operator's Station

- Adjustable independent-control positions (levers-to-seat, seat-to-pedals)
- AM/FM radio
- Auto climate control/air conditioner/heater/pressurizer
- Built-in Operator's Manual storage compartment and manual
- Cell-phone power outlet, 12 volt, 60 watt, 5 amp
- Coat hook
- Standard cloth seat, mechanical suspension, with 100-mm (4 in.) adjustable armrests
- Retractable seat belt, 76 mm (3 in.) (conforms to SAE J368)
- Floor mat
- Front windshield wiper with intermittent speeds
- Gauges (illuminated): Diesel Exhaust Fluid (DEF) / Engine coolant / Fuel
- Horn, electric
- Hourmeter, electric
- Hydraulic shutoff lever, all controls
- Hydraulic warm-up control
- Interior light
- Large cup holder
- Machine Information Center (MIC)
- Mode selectors (illuminated): Power modes (3) / Travel modes (2 with automatic shift) / Work mode (1) / Boom mode
- Multifunction, color LCD monitor with: Diagnostic capability / Multiple-language capabilities / Maintenance tracking / Clock / System monitoring with alarm features: Auto-idle indicator, engine air cleaner restriction indicator light, engine check, engine coolant temperature indicator light with audible alarm, engine oil pressure indicator light with audible alarm, low-alternator-charge indicator light, low-fuel indicator light, low DEF indication with audible alarm, fault code alert indicator, fuel-rate display, wiper-mode indicator, work-lights-on indicator, and work-mode indicator

470 P Operator's Station (continued)

- Motion alarm with cancel switch (conforms to SAE J994)
- Power-boost switch on right console lever
- Propel pedals and hand levers
- SAE 2-lever control pattern
- Tinted glass
- Transparent tinted overhead hatch
- Hot/cold beverage compartment
- USB charging port
- ▲ Protection screens for cab front, rear, and side
- ▲ Window vandal-protection covers

Grade Management (factory installed)

- ▲ 2D Grade Guidance
- ▲ 3D Grade Guidance
- ▲ SmartGrade™ Ready 2D grade control
- ▲ SmartGrade 3D grade control

Electrical

- Right rear left 270-deg. camera system with additional LED surround lighting
- 100-amp alternator
- Blade-type multi-fused circuits
- Positive-terminal battery covers
- JDLINK™ wireless communication system (available in specific countries; see your dealer for details)
- ▲ Cab extension wiring harness

Lights

- LED work lights

Trim Packages

- **Level 1:** Mechanical seat and standard front LED worklights
- ▲ **Level 2:** Heated, air-suspension seat and standard front LED worklights
- ▲ **Level 3:** Heated, air-suspension seat, deluxe front LED worklights, and chrome exhaust
- ▲ **Level 4:** Premium-leather, thermal-heating, and active-cooling seat; deluxe front LED worklights; and chrome exhaust

Application Packages

- ▲ **Cold-weather package:** Engine-block heater and ether start aid
- ▲ **Debris package:** Engine air centrifugal precleaner for use in high-airborne-debris environments

While general information, pictures, and descriptions are provided, some illustrations and text may include product options and accessories NOT AVAILABLE in all regions, and in some countries products and accessories may require modifications or additions to ensure compliance with the local regulations of those countries.

Net engine power is with standard equipment including air cleaner, exhaust system, alternator, and cooling fan, at test conditions specified per ISO 9249. No derating is required up to 2000-m (6,560 ft.) altitude. Specifications and design subject to change without notice. Wherever applicable, specifications are in accordance with SAE standards. Except where otherwise noted, these specifications are based on a unit with 1370-mm (54 in.) bucket, 900-mm (36 in.) triple semi-grouser shoes, 8400-kg (18,519 lb.) counterweight, full fuel tank, and 79-kg (175 lb.) operator.



ME470PAU (22-07)



JOHN DEERE