

FORESTRY EQUIPMENT
FLEET



JOHN DEERE

THE RIGHT MACHINE FOR EVERY NEED

When you work in the logging industry, there's no such thing as a routine job or an easy day. That's why we have a complete lineup of equipment and technology to help you tackle your toughest projects — and overcome any obstacles along the way.

Whether it's delivering sizable **cut-to-length** results, rising above the challenges of **tracked full-tree** conditions, or cutting through the elements in **southern full-tree** applications, we have the jobsite-proven solutions to take you from start to finish.

You need to excel in the woods.

AND WE'RE THERE WHEN YOU NEED US.



Contents

Feller Bunchers, Tracked.....	4
Shovel Logger.....	9
Feller Bunchers, Wheeled.....	11
Forestry Swing Machines	13
Forwarders	20
Harvesters, Tracked.....	24
Harvesters, Wheeled.....	28
Knuckleboom Loaders.....	31
Skidders	33
Bogie Skidder	37
John Deere Work Tools.....	39
Waratah Attachments	43
John Deere Precision Forestry	48
John Deere Core Technology Features	50
Operator Assistance / Other Dealer-Delivered Uptime Solutions....	52

Feller Bunchers, Tracked

Now we've done it — again.

When we designed our next-generation 800M- and 900M-Series machines, we relied on over a half-century of forestry-equipment experience backed by the invaluable input of people just like you who run them every day. These job-proven models have been redefining uptime, productivity, and low daily operating costs because you wanted them to. Thanks to those on the ground, in the woods, and at the landing, these tracked feller bunchers continue to change the game.





Tracked Feller Bunchers

803M

Engine	224-kW (300 hp) John Deere PowerTech™ Plus 6090PSS 9.0 L
Forestry undercarriage	U6 EXD (Extreme Duty): 203.2-mm (8.0 in.) track chain, (9) lower rollers per side
Undercarriage-leveling mechanism	N/A
Ground clearance	744 mm (29 in.) with single-grouser tracks
Tractive effort	Standard travel: 241 kN (54,224 lbf) Dedicated travel: 225 kN (50,470 lbf)
Ground pressure, less attachment	59.4 kPa (8.6 psi) Includes standard equipment, 6.71-m boom, medium counterweight, half-full fuel tank, and 610-mm (24 in.) single-grouser tracks.
Standard boom, 6.71 m	Max. reach: 8.49 m (27 ft. 10 in.) to tip of saw blade Max. lift capacity: 4830 kg (10,650 lb.), bare pin at max. reach
Optional boom, 6.10 m	Max. reach: 7.88 m (25 ft. 10 in.) to tip of saw blade Max. lift capacity: 4400 kg (9,700 lb.), bare pin at max. reach
Weight, less attachment	29 030 kg (64,010 lb.) Includes standard equipment, 6.71-m boom, standard counterweight, half-full fuel tank, and 610-mm (24 in.) single-grouser tracks.
Felling heads	FS22B, 559-mm (22 in.) cut capacity, 30-deg. wrist rotation FR21B, 545-mm (21.5 in.) cut capacity, 302-deg. wrist rotation FR22B, 559-mm (22 in.) cut capacity, 312-deg. wrist rotation* FS50, 508-mm (20 in.) cut capacity, 30-deg. wrist rotation FR50, 508-mm (20 in.) cut capacity, 310-deg. wrist rotation* *Available on 6.10-m boom only.
Shipping dimensions	(H) 3.5 m (11 ft. 6 in.) (W) 3.28 m (10 ft. 9 in.) with 610-mm (24 in.) tracks* (L) 11.1 m (36 ft. 5 in.) with boom extended in shipping position *With optional walkway width is 3.43 m (11 ft. 3 in.).



Tracked Feller Bunchers

853M

859M

Engine	John Deere PowerTech™ PSS 9.0 L Standard travel: 224 kW (300 hp) Dedicated travel: 246 kW (330 hp)	John Deere PowerTech PSS 9.0 L Standard travel: 224 kW (300 hp) Dedicated travel: 246 kW (330 hp)
Forestry undercarriage	U7 EXD (Extreme Duty): 215.9-mm (8.5 in.) track chain, (9) lower rollers per side	U7L EXD: 215.9-mm (8.5 in.) track chain, (10) lower rollers per side
Undercarriage-leveling mechanism	N/A	Forward: 26 deg. Rear: 7 deg. Side to side: 14 deg.
Ground clearance	779 mm (31 in.) with single-grouser tracks	746 mm (29 in.) with single-grouser tracks
Tractive effort	Standard travel: 322 kN (72,299 lbf) Dedicated travel: 308 kN (69,196 lbf)	Standard travel: 373 kN (83,876 lbf) Dedicated travel: 357 kN (80,257 lbf)
Ground pressure, less attachment	62.0 kPa (9.0 psi) Includes standard equipment, 6.71-m boom, medium extended counterweight, half-full fuel tank, and 610-mm (24 in.) single-grouser tracks.	71.9 kPa (10.4 psi) Includes standard equipment, 6.71-m boom, medium extended counterweight, half-full fuel tank, and 610-mm (24 in.) single-grouser tracks.
Standard boom, 6.71 m	Max. reach: 7.88 m (25 ft. 10 in.) to tip of saw blade; Max. lift capacity: 5540 kg (12,220 lb.), bare pin at max. reach	Max. reach: 7.88 m (25 ft. 10 in.) to tip of saw blade; Max. lift capacity: 5540 kg (12,220 lb.), bare pin at max. reach
Optional boom, 6.10 m	Max. reach: 8.49 m (27 ft. 10 in.) to tip of saw blade; Max. lift capacity: 6670 kg (14,710 lb.), bare pin at max. reach	Max. reach: 8.49 m (27 ft. 10 in.) to tip of saw blade; Max. lift capacity: 6670 kg (14,710 lb.), bare pin at max. reach
Weight, less attachment	32 430 kg (71,510 lb.) Includes standard equipment, 6.71-m boom, medium extended counterweight, half-full fuel tank, and 610-mm (24 in.) single-grouser tracks.	37 410 kg (82,490 lb.) Includes standard equipment, 6.71-m boom, medium extended counterweight, half-full fuel tank, and 610-mm (24 in.) single-grouser tracks.
Felling heads	FS22B, 559-mm (22 in.) cut capacity, 30-deg. wrist rotation FR21B, 545-mm (21.5 in.) cut capacity, 302-deg. wrist rotation FR22B, 559-mm (22 in.) cut capacity, 312-deg. wrist rotation FR27, 686-mm (27 in.) cut capacity, 300-deg. wrist rotation* FS50, 508-mm (20 in.) cut capacity, 30-deg. wrist rotation FR50, 508-mm (20 in.) cut capacity, 312-deg. wrist rotation *Available on 6.10-m boom only.	FS22B, 559-mm (22 in.) cut capacity, 30-deg. wrist rotation FR21B, 545-mm (21.5 in.) cut capacity, 302-deg. wrist rotation FR22B, 559-mm (22 in.) cut capacity, 312-deg. wrist rotation FR27, 686-mm (27 in.) cut capacity, 300-deg. wrist rotation* FS50, 508-mm (20 in.) cut capacity, 30-deg. wrist rotation FR50, 508-mm (20 in.) cut capacity, 312-deg. wrist rotation *Available on 6.10-m boom only.
Shipping dimensions	(H) 3.5 m (11 ft. 6 in.) (W) 3.30 m (10 ft. 10 in.) with 610-mm (24 in.) tracks* (L) 11.3 m (37 ft. 1 in.) with boom extended in shipping position**	(H) 3.9 m (12 ft. 10 in.) (W) 3.33 m (10 ft. 11 in.) with 610-mm (24 in.) tracks* (L) 11.3 m (37 ft. 1 in.) with boom extended in shipping position**
	*With optional walkway width is 349 m (11 ft. 5 in.). **With standard 6.71-m boom.	*With optional walkway width is 345 m (11 ft. 4 in.). **With standard 6.71-m boom.



Tracked Feller Bunchers

903M

953M

Engine	246 kW (330 hp) John Deere PowerTech™ Plus 6090PSS 9.0 L	246 kW (330 hp) John Deere PowerTech Plus 6090PSS 9.0 L
Forestry undercarriage	U7 EXD: 215.9-mm (8.5 in.) track chain, (9) lower rollers per side	U7 EXD: 215.9-mm (8.5 in.) track chain, (9) lower rollers per side
Ground clearance	779 mm (31 in.) with single-grouser tracks	779 mm (31 in.) with single-grouser tracks
Tractive effort	Standard travel: 322 kN (72,300 lbf)	Standard travel: 322 kN (72,300 lbf)
Ground pressure, less attachment	59.8 kPa (8.7 psi) Includes standard equipment, 7.01-m boom, small counterweight, half-full fuel tank, and 610-mm (24 in.) single-grouser tracks.	63.8 kPa (9.3 psi) Includes standard equipment, 7.01-m boom, large counterweight, half-full fuel tank, and 610-mm (24 in.) double-grouser tracks.
Standard boom, 7.01 m	Max. reach: 8.88 m (29 ft. 1 in.) to tip of saw blade; Max. lift capacity, standard: 5890 kg (12,990 lb.), bare pin at max. reach; Max. lift capacity with Rapid Cycle System (RCS): 7260 kg (16,010 lb.), bare pin at max. reach	Max. reach: 8.90 m (29 ft. 4 in.) to tip of saw blade; Max. lift capacity, standard and RCS: 7970 kg (17,570 lb.), bare pin at max. reach
Optional boom, 8.08 m	Max. reach: 9.82 m (32 ft. 3 in.) to tip of saw blade; Max. lift capacity, standard and RCS: 4890 kg (10,780 lb.), bare pin at max. reach	N/A
Weight, less attachment	31 330 kg (69,080 lb.) Includes standard equipment, 7.01-m boom, small counterweight, half-full fuel tank, and 610-mm (24 in.) single-grouser tracks.	33 330 kg (73,490 lb.) Includes standard equipment, 7.01-m boom, large counterweight, half-full fuel tank, and 610-mm (24 in.) double-grouser tracks.
Felling heads	With 7.01-m boom: FS22B, 559-mm (22 in.) cut capacity, 30-deg. wrist rotation FR22B, 559-mm (22 in.) cut capacity, 312-deg. wrist rotation FS50, 508-mm (20 in.) cut capacity, 30-deg. wrist rotation FR50, 508-mm (20 in.) cut capacity, 310-deg. wrist rotation With 8.08-m boom: FR21B, 545-mm (21.5 in.) cut capacity, 302-deg. wrist rotation	FS22B, 559-mm (22 in.) cut capacity, 30-deg. wrist rotation FR22B, 559-mm (22 in.) cut capacity, 312-deg. wrist rotation FR27, 686-mm (27 in.) cut capacity, 300-deg. wrist rotation FS50, 508-mm (20 in.) cut capacity, 30-deg. wrist rotation FR50, 508-mm (20 in.) cut capacity, 310-deg. wrist rotation
Shipping dimensions	(H) 3.55 m (11 ft. 8 in.) (W) 3.3 m (10 ft. 10 in.) with 610-mm (24 in.) tracks* (L) 12.6 m (41 ft. 4 in.) with boom extended in shipping position *With optional walkway width is 3.33 m (10 ft. 11 in.).	(H) 3.55 m (11 ft. 8 in.) (W) 3.3 m (10 ft. 10 in.) with 610-mm (24 in.) tracks* (L) 12.6 m (41 ft. 4 in.) with boom extended in shipping position *With optional walkway width is 3.33 m (10 ft. 11 in.).



Tracked Feller Bunchers

959M

Engine	246-kW (330 hp) John Deere PowerTech™ Plus 6090PSS 9.0 L
Forestry undercarriage	U7L EXD (Extreme Duty): 215.9-mm (8.5 in.) track chain, (10) lower rollers per side
Undercarriage-leveling mechanism	Forward: 26 deg. Rear: 7 deg. Side to side: 14 deg.
Ground clearance	770 mm (30 in.) with single-grouser tracks
Tractive effort	Standard travel: 373 kN (83,880 lbf)
Ground pressure, less attachment	72.6 kPa (10.5 psi) Includes standard equipment, 7.01-m boom, medium counterweight, half-full fuel tank, and 610-mm (24 in.) double-grouser tracks.
Standard boom, 7.01 m	Max. reach: 8.90 m (29 ft. 4 in.) to tip of saw blade Max. lift capacity, standard and RCS: 7970 kg (17,570 lb.), bare pin at max. reach
Optional boom	N/A
Weight, less attachment	37 760 kg (83,260 lb.) Includes standard equipment, 7.01-m boom, medium counterweight, half-full fuel tank, and 610-mm (24 in.) double-grouser tracks
Felling heads	FS22B, 559-mm (22 in.) cut capacity, 30-deg. wrist rotation FR22B, 559-mm (22 in.) cut capacity, 312-deg. wrist rotation FR27, 686-mm (27 in.) cut capacity, 300-deg. wrist rotation FS50, 508-mm (20 in.) cut capacity, 30-deg. wrist rotation FR50, 508-mm (20 in.) cut capacity, 310-deg. wrist rotation
Shipping dimensions	(H) 3.73 m (12 ft. 3 in.) (W) 3.33 m (10 ft. 11 in.) with 610-mm (24 in.) tracks (L) 12.6 m (41 ft. 4 in.) with boom extended in shipping position

Shovel Logger

Winning an uphill battle.

Whether you're on a steep slope or in a swamp, John Deere shovel loggers are built to tackle challenging conditions. If your jobsite has you facing an uphill battle, the 959ML with factory-installed shovel logger and directional feller configurations can help you dig on steep slopes. The 959ML Shovel Logger can easily grab all logs within reach when working either uphill or downhill, minimizing overall ground disturbance.





Shovel Loggers

959ML

	Directional Feller	Shovel Logger
Engine	246-kW (330 hp) John Deere PowerTech Plus 6090PSS 9.0 L	
Forestry undercarriage	U7L EXD: 215.9-mm (8.5 in.) track chain, (10) lower rollers per side	
Ground clearance	770 mm (30 in.) with single-grouser tracks	
Tractive effort	Standard travel: 373 kN (83,880 lbf)	Standard travel: 373 kN (83,880 lbf)
Ground pressure, less attachment	75.5 kPa (11.0 psi) Includes standard equipment, 11.0-m boom with heel, medium counterweight, half-full fuel tank, and 610-mm (24 in.) single-grouser tracks.	
Standard boom	10.34-m boom: Max. reach: 10.34 m (33 ft. 11 in.) to attachment pin; Max. lift capacity: 4860 kg (10,720 lb.), bare pin at max. reach	11.0-m boom with live heel: Max. reach: 11.0 m (36 ft. 1 in.) to attachment pin; Max. lift capacity: 4360 kg (9,610 lb.), bare pin at max. reach
Optional boom	9.12-m boom: Max. reach: 9.12 m (29 ft. 11 in.) to attachment pin; Max. lift capacity: 6170 kg (13,600 lb.), bare pin at max. reach	N/A
Weight, less attachment	37 390 kg (82,440 lb.)	39 360 kg (86,790 lb.) Includes standard equipment, 9.12-m boom (directional feller) and 11.0-m boom with heel (shovel logger), medium counterweight, half-full fuel tank, and 610-mm (24 in.) single-grouser tracks.
Felling heads	FL100, 1000-mm (39.3 in.) cut capacity, continuous rotation	N/A
Shipping dimensions	(H) 4.00 m (13 ft. 1 in.) (W) 3.33 m (10 ft. 11 in.) with 610-mm (24 in.) tracks (L) 13.9 m (45 ft. 7 in.) with boom extended in shipping position With 11.0-m boom with live heel.	

Feller Bunchers, Wheeled

Won't let up. Or let you down.

Our L-II Series Wheeled Feller Bunchers redefine reliability and durability. Redesigned electrical and hydraulic systems extend wear life and simplify service. Heavy-duty axles deliver stability and hill-climbing power in tough terrain. Configurable electrohydraulic controls and an extremely quiet cab boost operator comfort. These machines are built to work as long and hard as you do.





Wheeled Feller Bunchers

643L-II

843L-II

Engine	163-kW (219 hp) John Deere PowerTech™ PSS 6.8L	201-kW (270 hp) John Deere PowerTech PSS 6.8L
Transmission	Infinite variable hydrostatic with 2-speed gearbox	Infinite variable hydrostatic with 2-speed gearbox
Steering	Fully hydraulic, joystick; articulation angle 45 deg. each direction	Fully hydraulic, joystick; articulation angle 45 deg. each direction
Wheelbase	3023 mm (119 in.)	3175 mm (125 in.)
Ground clearance	484 mm (19 in.)	484 mm (19 in.)
Weight, less head	13 910 kg (30,704 lb.)	13 910 kg (30,704 lb.)
Fuel tank capacity	396 L (104.6 gal.)	396 L (104.6 gal.)
Felling heads	FD22B DSFH single post, 559-mm (22 in.) cut capacity FD45 DSFH twin post, 508-mm (20 in.) cut capacity FD55 DSFH twin post, 584-mm (23 in.) cut capacity	FD22B DSFH single post, 559-mm (22 in.) cut capacity FD45 DSFH twin post, 508-mm (20 in.) cut capacity FD55 DSFH twin post, 584-mm (23 in.) cut capacity
Shipping dimensions	With 28L-26 tires: Wheelbase: 3023 mm (119 in.) (H) 3216 mm (126.6 in.) (W) 2913 mm (114.7 in.) (L) 7340 mm (289 in.) with FD45 head	With 28L-26 tires: Wheelbase: 3175 mm (125 in.) (H) 3216 mm (126.6 in.) (W) 2913 mm (114.7 in.) (L) 7416 mm (292 in.) with FD22B head

Forestry Swing Machines

Stack the deck in your favor.

When you need a definite advantage, look to our complete line of forestry swing machines. Your input has driven the standard for comfort and safety, including a major cab update with improvements you won't want to work without. A simplified electrical system, beefier structures, a more robust cooling system, and a debris-fighting hydraulic reversing fan highlight a host of other features designed to help boost productivity. Let our G-Series Road Builders, Log Loaders, and Processors — including the new 2956G — change your expectations about what a swing machine can accomplish for your operation.





Road Builders

2154G

2654G

Engine	122-kW (164 hp) John Deere PowerTech™ PVS 6.8 L	145-kW (194 hp) John Deere PowerTech PVS 6.8 L
Total combined pump flow	472 L/m (124.6 gpm)	496 L/m (131 gpm)
Swing speed	12.6 rpm	10.6 rpm
Swing torque	74 376 Nm (54,857 lb.-ft.)	107 869 Nm (79,560 lb.-ft.)
Fuel capacity	800 L (211 gal.)	800 L (211 gal.)
Operating weight (less attachment)	28 000 kg (61,730 lb.)	33 272 kg (73,353 lb.)
Drawbar pull	Standard: 22 634 kgf (49,900 lbf) Optional: 30 350 kgf (66,910 lbf)	30 350 kgf (66,910 lbf)
Maximum reach	9.86 m (32 ft. 4 in.)	10.16 m (33 ft. 4 in.)
Lift capacity over front at ground level, 6.1-m (20 ft.) reach, bare pin	7330 kg (16,160 lb.)	8550 kg (18,850 lb.)
Shipping dimensions	(H) 3.78 m (12 ft. 5 in.) (W) 3.23 m (10 ft. 7 in.) (L) 9.83 m (32 ft. 3 in.)	(H) 3.84 m (12 ft. 7 in.) (W) 3.38 m (11 ft. 1 in.) (L) 10.16 m (33 ft. 4 in.)



Road Builders

3154G

3754G

Engine	186-kW (249 hp) John Deere PowerTech™ PSS 9.0 L	202-kW (271 hp) John Deere PowerTech PSS 9.0 L
Total combined pump flow	496 L/m (131.0 gpm)	608 L/m (160.6 gpm)
Swing speed	8.7 rpm	11.0 rpm
Swing torque	120 000 Nm (88,507 lb.-ft.)	120 000 Nm (88,507 lb.-ft.)
Fuel capacity	1080 L (285 gal.)	1080 L (285 gal.)
Operating weight (less attachment)	38 494 kg (84,865 lb.)	43 143 kg (95,114 lb.)
Drawbar pull	30 350 kgf (66,910 lbf)	36 102 kgf (79,590 lbf)
Maximum reach	10.80 m (35 ft. 5 in.)	11.05 m (36 ft. 3 in.)
Lift capacity over front at ground level, 6.1-m (20 ft.) reach, bare pin	10 810 kg (23,830 lb.)	13 470 kg (29,700 lb.)
Shipping dimensions	(H) 3.84 m (12 ft. 7 in.) (W) 3.48 m (11 ft. 5 in.) (L) 11.15 m (36 ft. 7 in.)	(H) 3.81 m (12 ft. 6 in.) (W) 3.48 m (11 ft. 5 in.) (L) 11.15 m (36 ft. 7 in.)



Log Loaders

2156G

2656G

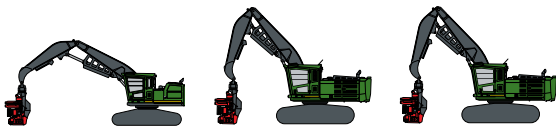
Engine	122-kW (164 hp) John Deere PowerTech™ PVS 6.8 L	145-kW (194 hp) John Deere PowerTech PVS 6.8 L
Total combined pump flow	472 L/m (124.6 gpm)	496 L/m (131 gpm)
Swing speed	12.6 rpm	10.6 rpm
Swing torque	74 376 Nm (54,857 lb.-ft.)	107 869 Nm (79,560 lb.-ft.)
Fuel capacity	800 L (211 gal.)	800 L (211 gal.)
Operating weight (less attachment)	Valve-in-Head (VIH): 30 882 kg (68,083 lb.) Live heel: 31 169 kg (68,175 lb.)	VIH: 35 925 kg (79,200 lb.) Live heel: 36 252 kg (79,922 lb.)
Drawbar pull	Standard: 22 634 kgf (49,900 lbf) Optional: 30 350 kgf (66,910 lbf)	30 350 kgf (66,910 lbf)
Maximum reach	VIH: 9.93 m (32 ft. 7 in.) Live heel: 10.97 m (36 ft. 0 in.)	VIH: 10.67 m (35 ft. 0 in.) Live heel: 11.71 m (38 ft. 5 in.)
Lift capacity over front at ground level, 6.1-m (20 ft.) reach, bare pin	VIH: 10 050 kg (22,150 lb.) Live heel: 9790 kg (21,570 lb.)	VIH: 11 120 kg (24,510 lb.) Live heel: 10 710 kg (23,600 lb.)
Shipping dimensions	(H) 3.78 m (12 ft. 5 in.) (W) 3.23 m (10 ft. 7 in.) (L) VIH: 13.67 m (44 ft. 10 in.) Live heel: 13.49 m (44 ft. 3 in.)	(H) 3.84 m (12 ft. 7 in.) (W) 3.38 m (11 ft. 1 in.) (L) VIH: 14.25 m (46 ft. 9 in.) Live heel: 14.15 m (46 ft. 5 in.)



Log Loaders	2956G	3156G	3756G
Engine	166-kW (223 hp) John Deere PowerTech PSS 6.8 L	186-kW (249 hp) John Deere PowerTech PSS 9.0 L	202-kW (271 hp) John Deere PowerTech PSS 9.0 L
Total combined pump flow	496 L/m (131.0 gpm)	496 L/m (131.0 gpm)	608 L/m (160.6 gpm)
Swing speed	8.7 rpm	8.7 rpm	11.0 rpm
Swing torque	120 000 Nm (88,507 lb.-ft.)	120 000 Nm (88,507 lb.-ft.)	148 462 Nm (109,500 lb.-ft.)
Fuel capacity	800 L (211 gal.)	1080 L (285 gal.)	1080 L (285 gal.)
Operating weight (less attachment)	VIH: 38 184 kg (84,181 lb.) Live heel: 39 004 kg (85,989 lb.)	VIH: 42 352 kg (93,371 lb.) Live heel: 43 429 kg (95,745 lb.)	VIH: 48 032 kg (105,893 lb.) Live heel: 48 852 kg (107,700 lb.)
Drawbar pull	30 350 kgf (66,910 lbf)	30 350 kgf (66,910 lbf)	36 102 kgf (79,590 lbf)
Maximum reach	VIH: 10.90 m (35 ft. 9 in.) Live heel: 11.91 m (39 ft. 1 in.)	VIH: 11.13 m (36 ft. 6 in.) Live heel: 12.55 m (41 ft. 2 in.)	VIH: 11.68 m (38 ft. 4 in.) Live heel: 13.13 m (43 ft. 1 in.)
Lift capacity over front at ground level, 6.1-m (20 ft.) reach, bare pin	VIH: 11 890 kg (26,210 lb.) Live heel: 11 680 kg (25,750 lb.)	VIH: 13 660 kg (30,100 lb.) Live heel: 13 460 kg (29,660 lb.)	VIH: 18 610 kg (41,020 lb.) Live heel: 13 090 kg (28,840 lb.)
Shipping dimensions	(H) 3.83 m (12 ft. 7 in.) (W) 3.40 m (11 ft. 2 in.) (L) VIH: 14.95 m (49 ft. 0 in.) Live heel: 14.98 m (49 ft. 2 in.)	(H) 3.86 m (12 ft. 8 in.) (W) 3.48 m (11 ft. 5 in.) (L) VIH: 15.39 m (50 ft. 6 in.) Live heel: 15.52 m (50 ft. 11 in.)	(H) 3.81 m (12 ft. 6 in.) (W) 3.48 m (11 ft. 5 in.) (L) VIH: 15.98 m (52 ft. 5 in.) Live heel: 16.59 m (54 ft. 5 in.)



Processors	2154G	2654G
Engine	122-kW (164 hp) John Deere PowerTech™ PVS 6.8 L	145-kW (194 hp) John Deere PowerTech PVS 6.8 L
Total combined pump flow	472 L/m (124.6 gpm)	496 L/m (131.0 gpm)
Swing speed	12.6 rpm	10.6 rpm
Swing torque	74 376 Nm (54,857 lb.-ft.)	107 869 Nm (79,560 lb.-ft.)
Fuel capacity	800 L (211 gal.)	800 L (211 gal.)
Operating weight (less attachment)	28 352 kg (62,505 lb.)	34 317 kg (75,656 lb.)
Drawbar pull	Standard: 22 634 kgf (49,900 lbf) Optional: 30 350 kgf (66,910 lbf)	30 350 kgf (66,910 lbf)
Maximum reach	8.74 m (28 ft. 8 in.)	8.94 m (29 ft. 4 in.)
Lift capacity over front at ground level, 6.1-m (20 ft.) reach, bare pin	7400 kg (16,320 lb.)	8670 kg (19,120 lb.)
Shipping dimensions	(H) 3.78 m (12 ft. 5 in.) (W) 3.23 m (10 ft. 7 in.) (L) 9.86 m (32 ft. 4 in.)	(H) 3.96 m (13 ft. 0 in.) (W) 3.38 m (11 ft. 1 in.) (L) 10.21 m (33 ft. 6 in.)



Processors	2956G	3156G	3756G
Engine	166-kW (223 hp) John Deere PowerTech™ PSS 6.8 L	186-kW (249 hp) John Deere PowerTech PSS 9.0 L	202-kW (271 hp) John Deere PowerTech PSS 9.0 L
Total combined pump flow	496 L/m (131.0 gpm)	496 L/m (131.0 gpm)	608 L/m (160.6 gpm)
Swing speed	8.7 rpm	8.7 rpm	11.0 rpm
Swing torque	120 000 Nm (88,507 lb.-ft.)	120 000 Nm (88,507 lb.-ft.)	148 462 Nm (109,500 lb.-ft.)
Fuel capacity	800 L (211 gal.)	1080 L (285 gal.)	1080 L (285 gal.)
Operating weight (less attachment)	38 961 kg (85,894 lb)	42 579 kg (93,870 lb.)	48 471 kg (106,861 lb.)
Drawbar pull	30 350 kgf (66,910 lbf)	30 350 kgf (66,910 lbf)	36 102 kgf (79,590 lbf)
Maximum reach	11.05 m (36 ft. 3 in.)	11.07 m (36 ft. 4 in.)	11.63 m (38 ft. 2 in.)
Lift capacity over front at ground level, 6.1-m (20 ft.) reach, bare pin	11 660 kg (25,700 lb.)	13 350 kg (29,430 lb.)	18 130 kg (39,970 lb.)
Shipping dimensions	(H) 3.83 m (12 ft. 7 in.) (W) 3.40 m (11 ft. 2 in.) (L) 14.52 m (47 ft. 7 in.)	(H) 3.86 m (12 ft. 8 in.) (W) 3.48 m (11 ft. 5 in.) (L) 14.81 m (48 ft. 7 in.)	(H) 3.81 m (12 ft. 6 in.) (W) 3.48 m (11 ft. 5 in.) (L) 15.37 m (50 ft. 5 in.)

Forwarders

Get more from your long haul.

Smoothly strong booms, rugged transmissions and structures, convenient operator comfort, and optional Intelligent Boom Control (IBC) are just some of the reliable features you've come to expect from John Deere forwarders. Our mid-size G-Series models — including the nimble 1110G, high-performance 1210G, and efficiently powerful 1510G — continue the tradition. Robust axles and brakes, rotating and leveling cabin, large load spaces, and high tractive forces help get more things done. The proven 1910G and compact 910G and 1010G reliably round out the lineup. No matter where in the woods your work takes you, there's a Deere forwarder to match your application.





Forwarders

910G

1010G

Engine	118-kW (160 hp) John Deere PowerTech™ Plus 4045	131-kW (178 hp) John Deere PowerTech Plus 4045
Powertrain	Hydrostatic-mechanical, 2-speed gearbox, 6WD or 8WD	Hydrostatic-mechanical, 2-speed gearbox, 6WD or 8WD
Hydraulics	Load sensing	Load sensing
Operator's cab	Fixed, rotating, or rotating and leveling	Fixed, rotating, or rotating and leveling
Boom reach	CF5, 8.5 m (27.9 ft.) or 10 m (32.8 ft.)	CF5, 8.5 m (27.9 ft.) or 10 m (32.8 ft.)
Load rating	9000 kg (19,842 lb.) / 10 000 kg (22,046 lb.)	11 000 kg (24,251 lb.)
Minimum weight, 6WD/8WD, depending on equipment	14 700–14 950 kg (32,408–32,959 lb.)	14 950–16 050 kg (32,959–35,384 lb.)
Shipping dimensions	(H) 3672 mm (12.0 ft.) with 22.5 tires / 3685 mm (12.1 ft.) with 24.5 tires (W) 2553–2570 mm (8.35–8.4 ft.) with 600-Series tires (L) 8655–9055 mm (28.4–29.7 ft.)	(H) 3685 mm (12.1 ft.) with 24.5 tires / 3712 mm (12.2 ft.) with 26.5 tires (W) 2570–2600 mm (8.4–8.5 ft.) with 600-Series tires (L) 8655–9055 mm (28.4–29.7 ft.)



Forwarders

1110G

1210G

Engine	145-kW (194 hp) John Deere PowerTech™ Plus 6068	156-kW (209 hp) John Deere PowerTech Plus 6068
Powertrain	Hydrostatic-mechanical, 2-speed gearbox, 6WD or 8WD	Hydrostatic-mechanical, 2-speed gearbox, 6WD or 8WD
Hydraulics	Load sensing	Load sensing
Operator's cab	Fixed, rotating, or rotating and leveling	Fixed, rotating, or rotating and leveling
Boom reach	CF5/CF7, 8.5 m (27.9 ft.)	CF7, 8.5 m (27.9 ft.) or 10 m (32.8 ft.)
Load rating	12 000 kg (26,455 lb.)	13 000 kg (28,660 lb.)
Minimum weight, 6WD/8WD, depending on equipment	15 330–17 130 kg (33,797–37,765 lb.)	16 180–18 080 kg (35,671–39,860 lb.)
Shipping dimensions	(H) 3870 mm (12.7 ft.) (W) 2700 mm (8.9 ft.) with 600-Series tires (L) 9820–10 820 mm (32.2–35.5 ft.)	(H) 3800 mm (12.5 ft.) (W) 2746 mm (9 ft.) with 600-Series tires (L) 9820–10 820 mm (32.2–35.5 ft.)



Forwarders

1510G

1910G

Engine	164-kW (220 hp) John Deere PowerTech™ Plus 6068	200-kW (268 hp) John Deere PowerTech Plus 6090
Powertrain	Hydrostatic-mechanical, 2-speed gearbox, 6WD or 8WD	Hydrostatic-mechanical, 2-speed gearbox, 6WD or 8WD
Hydraulics	Load sensing	Load sensing
Operator's cab	Fixed, rotating, or rotating and leveling	Fixed or rotating and leveling
Boom reach	CF7/CF7S, 8.5 m (27.9 ft.) or 10 m (32.8 ft.)	CF8, 7.3 m (23.9 ft.) or 8.5 m (27.9 ft.)
Load rating	15 000 kg (33,069 lb.)	19 000 kg (41,888 lb.)
Minimum weight, 6WD/8WD, depending on equipment	16 330–18 230 kg (36,001–40,190 lb.)	19 485–22 227 kg (42,957–49,002 lb.)
Shipping dimensions	(H) 3800 mm (12.5 ft.) (W) 2956 mm (9.7 ft.) with 700-Series tires (L) 9820–11 020 mm (32.2–36.1 ft.)	(H) 4039 mm (13.2 ft.) (W) 3090 mm (10.1 ft.) with 700-Series tires (L) 10 567–11 467 mm (34.7–37.6 ft.)

Harvesters, Tracked

Rewrite the rules of business.

Once again, we went to our toughest customers, loggers just like you, to help develop some rugged machines. Our MH-Series Tracked Harvesters were designed to help you take on more and get it done. Large-displacement 9.0L engines deliver the power and torque to move, swing, and harvest faster than our previous models — all at a low daily fuel cost. A variety of boom sets and harvester heads combine to suit a range of applications. Optional Intelligent Boom Control (IBC) smoothes boom operation, making it more precise and efficient. And our reimagined cab features a wealth of welcome creature comforts. So take a seat and get right down to business.





Tracked Harvesters

803MH

853MH

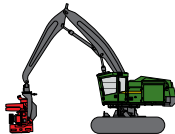
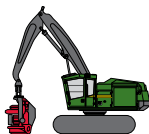
Engine	224-kW (300 hp) John Deere PowerTech™ PSS 9.0 L	224-kW (300 hp) John Deere PowerTech PSS 9.0 L
Forestry undercarriage	U6 EXD (Extreme Duty): 203.2-mm (8.0 in.) track chain, (9) lower rollers per side	U7 EXD: 215.9-mm (8.5 in.) track chain, (9) lower rollers per side
Ground clearance	744 mm (29 in.) with single-grouser tracks	779 mm (31 in.) with single-grouser tracks
Tractive effort	Standard travel: 241 kN (54,224 lbf) Dedicated travel: 225 kN (50,470 lbf)	Standard travel: 322 kN (72,300 lbf) Dedicated travel: 308 kN (69,196 lbf)
Ground pressure, less attachment	59.9 kPa (8.8 psi) Includes standard equipment, 8.84-m boom, medium counterweight, half-full fuel tank, and 610-mm (24 in.) single-grouser tracks.	59.8 kPa (8.7 psi) Includes standard equipment, 8.84-m boom, medium extended counterweight, half-full fuel tank, and 610-mm (24 in.) single-grouser tracks.
Standard boom, 8.84 m	Max. reach: 8.84 m (29 ft. 0 in.) to attachment pin; Max. lift capacity: 4190 kg (9,240 lb.), bare pin at max. reach	Max. reach: 8.84 m (29 ft. 0 in.) to attachment pin; Max. lift capacity: 4190 kg (9,240 lb.), bare pin at max. reach
Optional boom	775-m boom: Max. reach: 775 m (25 ft. 5 in.) to attachment pin; Max. lift capacity: 5520 kg (12,170 lb.), bare pin at max. reach 9.91-m boom: Max. reach: 9.91 m (32 ft. 6 in.) to attachment pin; Max. lift capacity: 3500 kg (7,720 lb.), bare pin at max. reach	775-m boom: Max. reach: 775 m (25 ft. 5 in.) to attachment pin; Max. lift capacity: 5520 kg (12,170 lb.), bare pin at max. reach 9.91-m boom: Max. reach: 9.91 m (32 ft. 6 in.) to attachment pin; Max. lift capacity: 3500 kg (7,718 lb.), bare pin at max. reach
Weight, less attachment	28 400 kg (62,620 lb.) Includes standard equipment, 8.84-m boom, medium counterweight, half-full fuel tank, and 610-mm (24 in.) single-grouser tracks.	31 240 kg (68,880 lb.) Includes standard equipment, 8.84-m boom, medium extended counterweight, half-full fuel tank, and 610-mm (24 in.) single-grouser tracks.
Harvester heads	Cut capacity: 775-m / 8.84-m booms: HTH616C, 550 mm (21.7 in.) HTH622B, 750 mm (29.5 in.) HTH623C, 750 mm (29.5 in.) 9.91-m boom: H425X, 710 mm (28.0 in.)	Cut capacity: 775-m / 8.84-m booms: HTH616C, 550 mm (21.7 in.) HTH622B, 750 mm (29.5 in.) HTH623C, 750 mm (29.5 in.) HTH624C, 810 mm (31.9 in.)* 9.91-m boom: H425X, 710 mm (28.0 in.) *Available on 775-m boom only.
Shipping dimensions	(H) 3.5 m (11 ft. 6 in.) (W) 3.28 m (10 ft. 9 in.) with 610-mm (24 in.) tracks* (L) 11.3 m (37 ft. 1 in.) with boom extended in shipping position** *With optional walkway width is 3.43 m (11 ft. 3 in.). **With standard 8.84-m boom and standard counterweight.	



Tracked Harvesters

859MH

Engine	John Deere PowerTech™ PSS 9.0 L Standard travel: 224 kW (300 hp) Dedicated travel: 246 kW (330 hp)	
Forestry undercarriage	U7L EXD (Extreme Duty): 215.9-mm (8.5 in.) track chain, (10) lower rollers per side	
Undercarriage-leveling mechanism	Forward: 26 deg. Rear: 7 deg. Side to side: 14 deg.	
Ground clearance	748 mm (29 in.) with single-grouser tracks	
Tractive effort	Standard travel: 373 kN (83,876 lbf) Dedicated travel: 357 kN (80,257 lbf)	
Ground pressure, less attachment	69.6 kPa (10.1 psi) Includes standard equipment, 775-m boom, medium extended counterweight, half-full fuel tank, and 610-mm (24 in.) single-grouser tracks.	
Standard boom, 8.84 m	Max. reach: 8.84 m (29 ft. 0 in.) to attachment pin; Max. lift capacity: 4190 kg (9,240 lb.), bare pin at max. reach	
Optional boom	775-m boom: Max. reach: 7.75 m (25 ft. 5 in.) to attachment pin; Max. lift capacity: 5520 kg (12,170 lb.), bare pin at max. reach 9.91-m boom: Max. reach: 9.91 m (32 ft. 6 in.) to attachment pin; Max. lift capacity: 3500 kg (7,718 lb.), bare pin at max. reach	
Weight, less attachment	36 220 kg (79,870 lb.) Includes standard equipment, 8.84-m boom, medium extended counterweight, half-full fuel tank, and 610-mm (24 in.) single-grouser tracks.	
Harvester heads	Cut capacity: 775-m / 8.84-m booms: HTH616C, 550 mm (21.7 in.) HTH622B, 750 mm (29.5 in.) HTH623C, 750 mm (29.5 in.) HTH624C, 810 mm (31.9 in.)* *Available on 775-m boom only. 9.91-m boom: HTH616C, 550 mm (21.7 in.)	
Shipping dimensions	H) 3.9 m (12 ft. 10 in.) (W) 3.33 m (10 ft. 11 in.) with 610-mm (24 in.) tracks* (L) 11.6 m (38 ft. 1 in.) with boom extended in shipping position** *With optional walkway width is 3.45 m (11 ft. 4 in.). **With standard 8.84-m boom and standard counterweight.	



Tracked Harvesters

953MH

959MH

Engine	246-kW (330 hp) John Deere PowerTech™ Plus 6090PSS 9.0 L	246-kW (330 hp) John Deere PowerTech Plus 6090PSS 9.0 L
Forestry undercarriage	U7 EXD: 215.9-mm (8.5 in.) track chain, (9) lower rollers per side	U7L EXD: 215.9-mm (8.5 in.) track chain, (10) lower rollers per side
Undercarriage-leveling mechanism	N/A	Forward: 26 deg. Rear: 7 deg. Side to side: 14 deg.
Ground clearance	779 mm (31 in.) with single-grouser tracks	770 mm (30 in.) with single-grouser tracks
Tractive effort	Standard travel: 322 kN (72,300 lbf)	Standard travel: 373 kN (83,880 lbf)
Ground pressure, less attachment	63.8 kPa (9.3 psi) Includes standard equipment, 10.34-m boom, large counterweight, half-full fuel tank, and 610-mm (24 in.) single-grouser tracks.	71.4 kPa (10.4 psi) Includes standard equipment, 10.34-m boom, medium counterweight, half-full fuel tank, and 610-mm (24 in.) single-grouser tracks.
Standard boom, 9.12 m	Max. reach: 9.12 m (29 ft. 11 in.) to attachment pin; Max. lift capacity: 6170 kg (13,600 lb.), bare pin at max. reach	Max. reach: 9.12 m (29 ft. 11 in.) to attachment pin; Max. lift capacity: 6170 kg (13,600 lb.), bare pin at max. reach
Optional boom, 10.34 m	Max. reach: 10.34 m (33 ft. 11 in.) to attachment pin; Max. lift capacity: 4860 kg (10,720 lb.), bare pin at max. reach	Max. reach: 10.34 m (33 ft. 11 in.) to attachment pin; Max. lift capacity: 4860 kg (10,720 lb.), bare pin at max. reach
Weight, less attachment	33 360 kg (73,560 lb.) Includes standard equipment, 10.34-m boom, large counterweight, half-full fuel tank, and 610-mm (24 in.) single-grouser tracks.	37 770 kg (83,280 lb.) Includes standard equipment, 10.34-m boom, medium counterweight, half-full fuel tank, and 610-mm (24 in.) single-grouser tracks.
Harvester heads	Cut capacity: HTH622B, 750 mm (29.5 in.) HTH623C, 750 mm (29.5 in.) HTH624C,* 810 mm (31.9 in.) HTH625C,* 900 mm (35.4 in.) *Only available for 9.12-m boom.	Cut capacity: HTH622B, 750 mm (29.5 in.) HTH623C, 750 mm (29.5 in.) HTH624C,* 810 mm (31.9 in.) HTH625C*, 900 mm (35.4 in.) *Only available for 9.12-m boom.
Shipping dimensions	(H) 3.55 m (11 ft. 8 in.) (W) 3.3 m (10 ft. 10 in.) with 610-mm (24 in.) tracks* (L) 12.6 m (41 ft. 4 in.) with boom extended in shipping position** *With optional walkway width is 3.33 m (10 ft. 11 in.). **With standard 9.12-m boom.	(H) 3.73 m (12 ft. 3 in.) (W) 3.33 m (10 ft. 11 in.) with 610-mm (24 in.) tracks (L) 12.6 m (41 ft. 4 in.) with boom extended in shipping position** **With standard 9.12-m boom.

Harvesters, Wheeled

Muscle-bound and all-around.

Our redesigned G-Series delivers more fuel economy, productivity, and uptime than previous models. Six-wheel 1470G and 1270G include a double-pump system featuring accurate boom control and efficient harvester heads. Eight-wheel 1270G and 1170G provide sure-footed slope-climbing ability and maneuverability over rough terrain. Available in four- and six-wheel configurations, the nimble 1070G is ideal for thinning operations. Comfortable cabs with 160-degree turning radius and state-of-the-art leveling systems enable extended visibility and productivity. Intelligent Boom Control (IBC) is now an available option on all models. Put the power of a G-Series Wheeled Harvester to work in your woods.





Wheeled Harvesters

1070G

1170G

Engine	136-kW (182 hp) John Deere PowerTech™ Plus 6068	155-kW (208 hp) John Deere PowerTech Plus 6068
Powertrain	Hydrostatic-mechanical, 2-speed gearbox, 4WD or 6WD	Hydrostatic-mechanical, 2-speed gearbox, 6WD or 8WD
Front and rear axles	Electrohydraulic differential lock at front and rear Front: Rigid axle (4W), balanced bogie (6W) Rear: Rigid axle	Electrohydraulic differential lock at front and rear Front: Balanced bogie Rear: Rigid axle (6W), balanced bogie (8W)
Front and rear tires (contact your dealer for further details)	Rim size Front: 34 in. or 26.5 in. (4W), 22.5 in. (6W) Rear: 34 in. (4W), 26.5 in. (6W) (W) 2600–2823 mm (8.53–9.26 ft.)	Rim size Front: 24.5 in. or 26.5 in. (6W), 24.5 in. (8W) Rear: 34 in. (6W), 24.5 in. (8W) (W) 2600–2840 mm (8.50–9.32 ft.)
Harvester heads	H212, H423, and H424	H212, H423, and H424
Boom reach, maximum	180S, 8.6 m (28.2 ft.) / 10 m (32.8 ft.) / 10.8 m (35.5 ft.) Slewing angle 220 deg. Tilt angle, backward/forward -14 deg./+28 deg.	CH6, 10 m (32.8 ft.) / 11.3 m (37.1 ft.) Slewing angle 220 deg. Tilt angle, backward/forward -14 deg./+28 deg.
Operator's cab	Leveling and rotating	Leveling and rotating
Minimum weight with harvester head	4WD: 15 200 kg (33,510 lb.) 6WD: 16 000 kg (35,274 lb.)	6WD: 17 800 kg (39,242 lb.) 8WD: 19 500 kg (42,990 lb.)
Shipping dimensions	(H) with rotating and leveling cab: 3708–3730 mm (12.17–12.24 ft.) (W) See tires (L) 11 424–11 435 mm (37.48–37.52 ft.)	(H) with rotating and leveling cab: 3756–3933 mm (12.32–12.90 ft.) (W) See tires (L) 11 797–11 868 mm (38.70–38.94 ft.)



Wheeled Harvesters

1270G

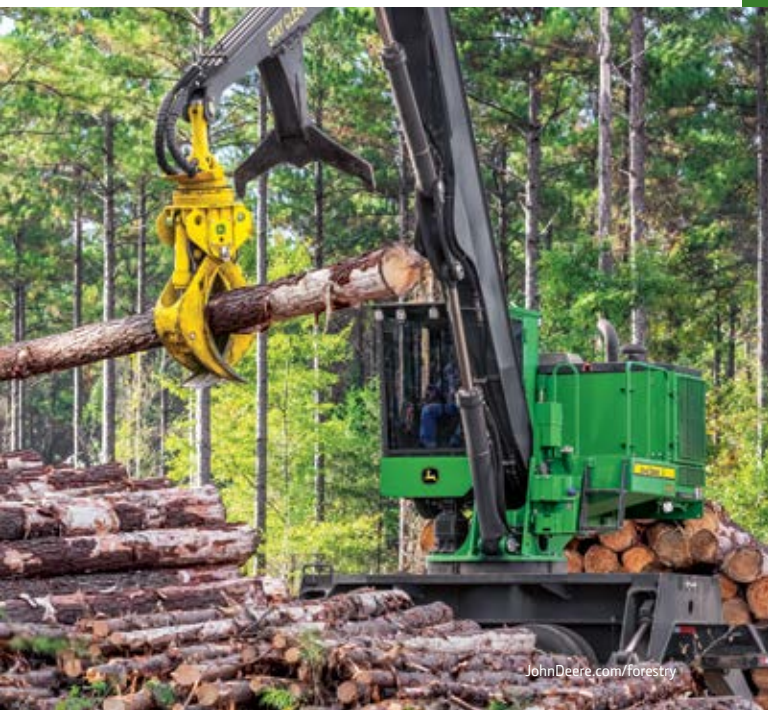
1470G

Engine	200 kW (268 hp) John Deere PowerTech™ Plus 6090 6WD and 8WD	200 kW (268 hp) John Deere PowerTech Plus 6090
Powertrain	Hydrostatic-mechanical, 2-speed gearbox, 6WD or 8WD	Hydrostatic-mechanical, 2-speed gearbox, 6WD
Front and rear axles	Hydromechanical differential lock at front and rear Front: Balanced bogie Rear: Rigid axle	Hydromechanical differential lock at front and rear Front: Balanced bogie Rear: Rigid axle
Front and rear tires (contact your dealer for further details)	Rim size Front: 26.5–20 Rear: 34–14 (6W), 26.5–20 (8W) Width: 2746–2960 mm (9.00–9.71 ft.)	Rim size Front: 26.5–20 Rear: 34–16 Width: 2990 mm (9.81 ft.)
Harvester heads	H270 Series II, H215E, H423, H424, H425, H425HD, and H480C	H270 Series II, H215E, H219, H425, H425HD, and H480C
Boom reach, maximum	CH7, 8.6 m (28.2 ft.) / 10 m (32.8 ft.) / 11.7 m (38.4 ft.) Slewing angle 220 deg. Tilt angle, backward/forward –15 deg./+28 deg.	CH9, 8.6 m (28.2 ft.) / 10 m (32.8 ft.) / 11 m (36.1 ft.) Slewing angle 220 deg. Tilt angle, backward/forward –18 deg./+28 deg.
Operator's cab	Leveling and rotating or fixed	Leveling and rotating or fixed
Minimum weight with harvester head	6WD: 20 650 kg (45,525 lb.) 8WD: 24 450 kg (53,903 lb.)	22 900 kg (50,486 lb.)
Shipping dimensions	(H) with leveling cab: 6WD: 3810 mm (12.5 ft.) 8WD: 3881 mm (12.73 ft.) (W) See tires (L) 6WD: 12 270 mm (40.25 ft.) 8WD: 12 560 mm (41.2 ft.)	(H) with leveling cab: 3910 mm (12.82 ft.) (W) See tires (L) 12 280 mm (40.28 ft.)

Knuckleboom Loaders

Step up the pace.

Our E-Series Knuckleboom Loaders feature a variable-displacement, pressure-flow-compensated hydraulic system and powerful diesels. John Deere log grapples up to 52 inches on the 437E combine with improved swing torque and boom lift to reduce delimiting and truck-loading times. Updated electrical system has fewer switches and relays, for greater reliability. These steady-paced performers are ready to outpace whatever work your day has in store.





Knuckleboom Loaders

337E

437E

Engine	129-kW (173 hp) John Deere PowerTech™ PVS 6068 HTJ57	129-kW (173 hp) John Deere PowerTech PVS 6068 HTJ57
Hydraulics	Tandem variable-displacement, axial-piston, load-sensing system	Tandem variable-displacement, axial-piston, load-sensing system
Boom reach	9144 mm (30 ft. 0 in.)	9754 mm (32 ft. 0 in.)
Lift capacity	8980 kg (19,798 lb.) at 3 m (10 ft.)	8980 kg (19,798 lb.) at 3 m (10 ft.)
Swing speed	10.0 rpm	10.0 rpm
Swing torque	44 038 Nm (32,500 ft.-lb.)	52 032 Nm (38,400 ft.-lb.)
Drive	2-stage planetary gearbox with piston motor	2-stage planetary gearbox with piston motor
Controls	Pilot levers, short stroke, low effort	Pilot levers, short stroke, low effort
Weight, less attachment	13 871 kg (30,580 lb.)	15 909 kg (35,073 lb.)
Shipping dimensions	(H) 4112 mm (13 ft. 6 in.) (W) 2606 mm (8 ft. 7 in.) (L) 1133 mm (37.2 ft.)	(H) 4112 mm (13 ft. 6 in.) (W) 2606 mm (8 ft. 7 in.) (L) 1230 mm (40.4 ft.)

Skidders

Tame the toughest woods.

With a simplified, easier-to-maintain design, our reimagined L-II Series Skidders are ready to roar. Outboard Extreme™-duty axles (standard on the 948L-II and 848L-II, optional on the 748L-II) withstand tough forest conditions. Grapple squeeze helps move more wood to the landing, more securely, than previous models. Steering sensors control articulation speed to cushion impact. Continuously Variable Transmission (CVT) combines the efficiency of a direct-drive transmission with the ease of operation and smoothness of a hydrostatic drive. So you can tackle it, day after day.





Grapple Skidders

648L-II

748L-II

Engine	177-kW (237 hp) John Deere PowerTech™ PSS 6.8L	196-kW (263 hp) John Deere PowerTech PSS 6.8L
Transmission	Continuously Variable Transmission (CVT)	CVT
Axle options	1400 Extreme Duty and SWEDA™	1425 SWEDA and 1700 Outboard-Extreme™
Grapples	<p>Standard capacity: Opening: 3226 mm (127.0 in.) Area: 1.24 m² (13.3 sq. ft.)</p> <p>Optional capacity: Opening: 3251 mm (128.0 in.) Area: 1.48 m² (15.9 sq. ft.)</p> <p>Optional capacity: Opening: 3886 mm (153.0 in.) Area: 1.63 m² (17.5 sq. ft.)</p>	<p>Standard capacity: Opening: 3251 mm (128.0 in.) Area: 1.48 m² (15.9 sq. ft.)</p> <p>Optional capacity: Opening: 3886 mm (153.0 in.) Area: 1.63 m² (17.5 sq. ft.)</p> <p>Optional capacity: Opening: 3785 mm (149.0 in.) Area: 1.77 m² (19.1 sq. ft.)</p>
Winch	<p>Bare drum at stall with 2-speed 4000 Winch: Low speed: 213.5 kN (47,997 lb.) High speed: 142.3 kN (31,990 lb.)</p> <p>Bare drum at stall with 2-speed 6000 Winch: Low speed: 221.0 kN (49,696 lb.) High speed: 147.3 kN (33,131 lb.)</p>	<p>Bare drum at stall with 2-speed 4000 Winch: Low speed: 213.5 kN (47,997 lb.) High speed: 142.3 kN (31,990 lb.)</p> <p>Bare drum at stall with 2-speed 6000 Winch: Low speed: 221.0 kN (49,696 lb.) High speed: 147.3 kN (33,131 lb.)</p>
Fuel tank capacity	391.8 L (103.5 gal.)	391.8 L (103.5 gal.)
Weight	19 054 kg (42,159 lb.)	19 713 kg (43,460 lb.)
Shipping dimensions	<p>With 30.5-32 tires: (H) 3365 mm (132.5 in.) (W) 3233 mm (127.3 in.) (L) 8129 mm (320.0 in.)*</p> <p><i>*Length based on 2.6-m (8.5 ft.) boom.</i></p>	<p>With 30.5-32 tires: (H) 3365 mm (132.5 in.) (W) 3239 mm (127.5 in.) (L) 8384 mm (330.0 in.)*</p>



Grapple Skidders

848L-II

948L-II

Engine	210-kW (281 hp) John Deere PowerTech™ PSS 9.0L	224-kW (300 hp) John Deere PowerTech PSS 9.0L
Transmission	CVT	CVT
Axle options	1700 Outboard-Extreme™	1700 Outboard-Extreme
Grapples	Standard capacity: Opening: 3785 mm (149.0 in.) Area: 1.77 m ² (19.1 sq. ft.) Optional capacity: Opening: 3886 mm (153.0 in.) Area: 1.63 m ² (17.5 sq. ft.)	Standard capacity: Opening: 3886 mm (153.0 in.) Area: 2.07 m ² (22.3 sq. ft.) Optional capacity: Opening: 3785 mm (149.0 in.) Area: 1.77 m ² (19.1 sq. ft.) Optional capacity: Opening: 3886 mm (153.0 in.) Area: 1.63 m ² (17.5 sq. ft.)
Winch	Bare drum at stall with 2-speed 4000 Winch: Low speed: 213.5 kN (47,997 lb.) High speed: 142.3 kN (31,990 lb.) Bare drum at stall with 2-speed 6000 Winch: Low speed: 221.0 kN (49,696 lb.) High speed: 147.3 kN (33,131 lb.)	Bare drum at stall with 2-speed 4000 Winch: Low speed: 213.5 kN (47,997 lb.) High speed: 142.3 kN (31,990 lb.) Bare drum at stall with 2-speed 6000 Winch: Low speed: 221.0 kN (49,696 lb.) High speed: 147.3 kN (33,131 lb.)
Fuel tank capacity	391.8 L (103.5 gal.)	391.8 L (103.5 gal.)
Weight	22 384 kg (49,499 lb.)	22 484 kg (49,570 lb.)
Shipping dimensions	With 35.5-32 tires: (H) 3454 mm (136.0 in.) (W) 3575 mm (140.7 in.) (L) 8469 mm (333.4 in.)* <i>*Length based on 2.6-m (8.5 ft.) boom.</i>	With 35.5-32 tires: (H) 3454 mm (136.0 in.) (W) 3575 mm (140.7 in.) (L) 8469 mm (333.4 in.)*



Cable Skidder

640L-II

Engine	177-kW (237 hp) John Deere PowerTech™ PSS 6.8L
Transmission	Continuously Variable Transmission (CVT)
Axle options	1400 Extreme Duty and SWEDA™
Winch	Bare drum at stall with 2-speed 4000 Winch: Low speed: 213.5 kN (47,997 lb.) High speed: 142.3 kN (31,990 lb.) Bare drum at stall with 2-speed 6000 Winch: Low speed: 221.0 kN (49,696 lb.) High speed: 147.3 kN (33,131 lb.)
Fuel tank capacity	342.2 L (90.4 gal.)
Weight	16 686 kg (36,787 lb.)
Shipping dimensions	With 30.5-32 tires: (H) 3365 mm (132.5 in.) (W) 3233 mm (127.3 in.) (L) 7591 mm (298.9 in.)

Bogie Skidder

Ground game

Don't let foul weather or adverse terrain get in the way of maximum productivity. The six-wheel John Deere 768L-II Bogie Skidder delivers outstanding traction, stability, and flotation, so you can work in wet, muddy conditions. And it's built tough to carry hefty loads over long distances — and help your operation reach its full potential.





Bogie Skidder

768L-II

Engine	210-kW (281 hp) John Deere PowerTech™ PSS 9.0L
Transmission	Continuously Variable Transmission (CVT)
Axle options	SWEDA™
Grapples	Standard capacity: Opening: 3886 mm (153.0 in.) Area: 1.63 m ² (17.5 sq. ft.) Optional capacity: Opening: 3785 mm (149.0 in.) Area: 1.77 m ² (19.1 sq. ft.) Optional capacity: Opening: 3886 mm (153.0 in.) Area: 2.07 m ² (22.3 sq. ft.)
Winch	Bare drum at stall with 2-speed 4000 Winch: Low speed: 213.5 kN (47,997 lb.) High speed: 142.3 kN (31,990 lb.)
Fuel tank capacity	352.0 L (93.0 gal.)
Weight	23 697 kg (52,245 lb.)
Shipping dimensions	With 30.5-32 tires: (H) 3365 mm (132.5 in.) (W) 3508 mm (138.1 in.) (L) 9075.3 mm (357.2 in.)

John Deere Work Tools

Cut to the bottom line.

Our signature attachments are just what your operation ordered. Whether you need drive-to-tree feller bunchers or swing-to-tree carriers, these versatile heads can take on a variety of jobs. Harvesting large trees, selective cutting, salvaging storm-damaged timber, or right-of-way clearing — our attachments are right there with you. Our felling-head lineup now also includes the FR27, our largest-cut-capacity model.



Harvesting and Processing Heads

	H423	H424	H425
Cutting capacity	58 cm (22.8 in.)	62 cm (24.4 in.)	75 cm (29.5 in.)
Delimiting (tip to tip)	42 cm (16.5 in.)	43 cm (17 in.)	46 cm (18.1 in.)
Weight (without rotator and link)	955 kg (2,105 lb.)	1105 kg (2,436 lb.)	1360 kg (2,998 lb.)

	H425HD	H480C
Cutting capacity	75 cm (29.5 in.)	71 cm (28 in.)
Maximum delimiting	46 cm (18.1 in.)	48 cm (18.1 in.)
Weight (without rotator and link)	1390 kg (3,064 lb.)	from 1350 kg (2,976 lb.)



H212

Cutting capacity	52 cm (20.5 in.)	55 cm (21.7 in.)
Maximum delimiting	36 cm (14.2 in.)	43 cm (16.9 in.)
Weight (without rotator and link)	770 kg (1,698 lb.)	1690 kg (3,726 lb.)

H225E

Cutting capacity	75 cm (29.5 in.)	65 cm (25.6 in.)
Maximum delimiting	51 cm (20.1 in.)	46 cm (18.1 in.)
Weight (without rotator and link)	1970 kg (4,343 lb.)	from 1350 kg (2,976 lb.)

H219

H270 Series II



Felling Heads

Drive-to-Tree

	FD22B	FD45	FD55
Cutting capacity	55.9 cm (22 in.)	50.8 cm (20 in.)	58.4 cm (23 in.)
Weight	3071 kg (6,770 lb.)	2424 kg (5,345 lb.)	2971 kg (6,550 lb.)
Accumulating capacity	0.48 m ² (5.2 sq. ft.)	0.65 m ² (7.0 sq. ft.)	0.63 m ² (6.8 sq. ft.)

Swing-to-Tree

	FS22B	FS50
Cutting capacity	55.9 cm (22 in.)	50.8 cm (20 in.)
Weight	3550 kg (7,830 lb.)	3370 kg (7,430 lb.)
Accumulating capacity	0.48 m ² (5.2 sq. ft.)	0.64 m ² (6.9 sq. ft.)

	FR21B	FR22B	FR27	FR50
Cutting capacity	54.5 cm (21.5 in.)	55.9 cm (22 in.)	68.6 cm (27 in.)	50.8 cm (20 in.)
Weight	3140 kg (6,920 lb.)	3840 kg (8,470 lb.)	4220 kg (9,310 lb.)	3660 kg (8,070 lb.)
Accumulating capacity	0.46 m ² (5.0 sq. ft.)	0.48 m ² (5.2 sq. ft.)	0.70 m ² (7.5 sq. ft.)	0.64 m ² (6.9 sq. ft.)

Directional Felling Head

FL100

Cutting capacity	100.0 cm (39.3 in.)
Weight	2995 kg (6,600 lb.)
Accumulating capacity	0.71 m ² (7.6 sq. ft.)



Waratah Attachments

The multi-tool of the woods.

Waratah has earned its reputation as “logger’s choice.” As we’ve proven over the years, these heads can do just about anything. From processing decked wood, to tree-length felling, to cut-to-length harvesting applications, with a Waratah every job gets done. Their brute grab-arm strength, outstanding power-to-weight ratios, and solid traction-synchronized drives see to it.



Harvesting and Processing Heads

200 Series

	H212	H225E	H219
Cutting capacity	52 cm (20.5 in.)	55 cm (21.7 in.)	75 cm (29.5 in.)
Delimiting (tip to tip)	36 cm (14.2 in.)	43 cm (16.9 in.)	51 cm (20.1 in.)
Weight (without rotator and link)	770 kg (1,698 lb.)	1690 kg (3,726 lb.)	1970 kg (4,343 lb.)

	H219X	H270 Series II
Cutting capacity	75 cm (29.5 in.)	65 cm (25.6 in.)
Delimiting (tip to tip)	51 cm (20.1 in.)	46 cm (18.1 in.)
Weight (without rotator and link)	2050 kg (4,519 lb.)	1350 kg (2,976 lb.)



400 Series

	H423	H424	H425
Cutting capacity	58 cm (22.8 in.)	62 cm (24.4 in.)	75 cm (29.5 in.)
Delimiting (tip to tip)	42 cm (16.5 in.)	43 cm (17 in.)	46 cm (18.1 in.)
Weight (without rotator and link)	955 kg (2,105 lb.)	1105 kg (2,436 lb.)	1360 kg (2,998 lb.)

	H425HD	H425X
Cutting capacity	75 cm (29.5 in.)	75 cm (29.5 in.)
Delimiting (tip to tip)	46 cm (18.1 in.)	46 cm (18.1 in.)
Weight (without rotator and link)	1390 kg (3,064 lb.)	1426 kg (3,144 lb.)



Harvesting and Processing Heads

600 Series

	HTH616C Series-III	HTH618C Series-III	HTH622B Series-III	HTH622C 4x4	HTH623C
Cutting capacity	55 cm (22 in.)	55 cm (22 in.)	75 cm (30 in.)	75 cm (30 in.)	75 cm (30 in.)
Weight	1800 kg (3,968 lb.)/ 2000 kg (4,409 lb.)	2300 kg (5,701 lb.)	2450 kg (5,401 lb.)	2760 kg (6,085 lb.)	3040 kg (6,702 lb.)
Maximum delimb opening	66 cm (26 in.)	66 cm (26 in.)	65 cm (26 in.)	65 cm (26 in.)	70 cm (28 in.)



HTH623C LP

75 cm (29 in.)

3140 kg
(6,923 lb.)

94 cm (37 in.)

HTH624C 4x4

82 cm (32 in.)

3560 kg
(7,848 lb.)

71 cm (28 in.)

HTH624C

82 cm (32 in.)

3530 kg
(7,782 lb.)

76 cm (30 in.)

HTH624C LP 4x4

81.5 cm (32 in.)

3560 kg
(7,848 lb.)

94 cm (37 in.)

HTH625C

90 cm (35 in.)

4390 kg (9,678 lb.)

80 cm (31 in.)

HTH626 Series-II

86 cm (34 in.)

4850 kg (10,692 lb.)

90 cm (35 in.)

FL100 Felling Head

100 cm (39.3 in.)

2995 kg (6,600 lb.)

Maximum
grapple opening
147 cm (57.8 in.)



John Deere Precision Forestry

Turn machine data into jobsite solutions.

John Deere Precision Forestry tools expand on the core technology features that come standard in each machine to unleash a powerful new set of possibilities. Streamline operations at the jobsite, in the back office, or in tandem to really make things work.

TimberManager™ and TimberMatic™ Maps can transform how you plan, implement, and monitor logging operations. This map-based production-planning and -tracking system allows contractors and operators to share information in real time, for more informed decision-making.



Remote monitoring

In addition to TimberMatic Maps onboard the machine, contractors and supervisors can monitor live progress from anywhere at any time using TimberManager — our web-based solution for PCs, tablets, and mobile phones. Select a logging site and view harvesting, skidding, and forwarding progress at a glance, along with more detailed information including machine production and efficiencies.

Precise progress tracking

As the job progresses, production data and logging routes are updated in real time on TimberMatic Maps, displaying actual, up-to-the-minute status of the jobsite. Using the Areas of Interest and Points of Interest functions, operators and contractors can easily mark hazards, obstacles, soft ground, and challenging terrain, in the cab or on a tablet to be shared in real time with relevant crew members, optimizing jobsite awareness and productivity.

Live production view

TimberMatic Maps shows the precise GPS-based location, estimated volume, and up to two species of timber for manual stem counts with a feller buncher — for simple, efficient planning. Forwarder operators can immediately see where certain species are located and choose the optimal route to pick up and transport a full load of a desired assortment to the landing.

Simplified mapping

TimberMatic Maps accommodates all common map formats, from simple hand-drawn maps to elaborate shapefiles or pdfs. Standard satellite or topographical imagery can be loaded directly through JDLINK™ connectivity onboard the machine. Using TimberManager, owners can change map features and share updates via an online, cloud-based solution without having to visit each machine.

Real-time updates

TimberMatic Maps is an innovative way to see the jobsite. Live production and location data is shared among John Deere forestry machines via a wireless mobile network and real-time cloud connection. Operators can view all machine locations and the current logging situation in real time using the TimberMatic Maps display through the TimberMatic control system in the machine cab.

Fleet optimization

TimberManager and TimberMatic Maps can take your operation beyond machine-level management by providing information and insights designed to improve jobsite productivity and the efficiency of your business.

Model compatibility

TimberMatic Maps and TimberManager are available on nearly all models of John Deere forestry equipment, including skidders, wheeled and tracked feller bunchers, wheeled and tracked harvesters, forwarders, and swing machines. Plus the system can be updated on most existing machines.

Your connection to enhanced profitability.

Each John Deere forestry machine arrives with a powerful set of technologies and capabilities built in. Each feature plays an integral role in managing the health and performance of your fleet.

John Deere Operations Center™

The John Deere Operations Center lets you track your equipment, see which machines are working, and find out if they're operating properly, productively, and efficiently.

John Deere Connected Support™

Enabled through your JDLink™ connection, John Deere Connected Support leverages a suite of dealer and factory tools designed to increase productivity and uptime while lowering daily operating costs. Dealers leverage JDLink, Expert Alerts, and remote diagnostics and programming to keep machines in peak operating condition. Dealer and factory teams work together through John Deere Connected Support to optimize machine uptime and profitability.



Remote diagnostics and programming

Your Deere dealer can initiate repair solutions without visiting the jobsite and charging you for a technician's travel time using remote diagnostics and programming capability. By accessing and resetting diagnostic trouble codes and recording performance readings remotely, your dealer can help you reduce downtime.

Remote diagnostic management

Your dealer can use remote diagnostics to read, analyze, and clear machine codes. This helps keep you in the field working and earning instead of on the phone getting answers or in the shop for costly repairs.

Remote machine-performance recordings

If your machine malfunctions at 1,000 rpm, for example, your Deere dealer can use remote diagnostics to record particular machine parameters at that rpm. And readings can be taken at full machine functionality, eliminating downtime. If parts are needed to fix the problem via remote diagnostics, the technician can arrive onsite with the right parts.

Remote software updates

Using remote programming, your machine can also receive wireless software updates, avoiding a technician trip to the jobsite. Your fleet-management and -maintenance team is twice as strong when the dealer and your machines are connected through remote diagnostics and programming.

Machine-health monitoring

To maximize equipment uptime, we monitor the health of your machines through an advanced dual approach:

- Specialists at your dealer's Machine Monitoring Center (MMC) use the latest connectivity and alert management tools to filter and analyze the JDLink data generated by your machines. They can also incorporate more traditional inputs, such as fluid-analysis results. This enables them to quickly identify critical issues and react — sometimes before you even know there is a problem.
- Our central Machine Health Monitoring Center located inside John Deere Dubuque Works analyzes data from thousands of connected machines. Analysts identify trends within the data, determine causes, and develop new and improved preventative-maintenance and repair protocols called Expert Alerts. These alerts are deployed to dealer MMCs to continuously improve the speed and accuracy of machine-health solutions.

Operator Assistance

The latest John Deere innovations not only make machine operation easier and more precise, they're designed to boost production and engage operators to help retain them over the long haul.

Intelligent Boom Control (IBC)

Intuitive and accurate, IBC refines boom operations to enhance precision and efficiency. By easing control of all boom movements, IBC enables an enhanced level of user control over both the logging operation and the bottom line. IBC is available for forwarders and tracked and wheeled harvesters.

Smooth Boom Control (SBC)

High-capacity controllers, a simplified Controller Area Network (CAN bus), and a streamlined electrical system help provide precise boom control. Available for tracked feller bunchers and tracked harvesters, SBC reduces machine wear and smooths the operator experience.

Our dealer support works for you.

Planned Maintenance (PM) agreements

Set up a three-year PM agreement with your new machine purchase, fixing costs over time to boost your bottom line. PM agreements work with machine-health alerts and recommendations from John Deere Precision Forestry — our service that thinks through JDLink™, fluid-sample, and inspection data gathered by certified technicians to promote machine health, uptime, and wear life.

Extended warranties

Custom-fit coverage to your operation with a John Deere extended warranty that defines a fixed cost for machine repairs over a set period of time. Extended warranties are a great way to protect your cash flow. And they're backed and honored by all John Deere Construction & Forestry dealers.

Fluid analysis

Save time and money by extending drain intervals. Fluid analysis is an important part of uptime solutions, especially when packaged with an extended warranty and a PM agreement. It provides data critical to the machine-health alerts and recommendations provided by John Deere Precision Forestry.

Custom uptime solutions

Loaner machines, response-time guarantees, or on-site parts inventory — your dealer will help deliver what you need.

Fast parts availability

Your John Deere dealer can fulfill your parts needs — over the counter, delivered to the jobsite, or ordered online. If a part isn't in stock, John Deere Regional Distribution Centers can provide same-day shipping* to the dealer or directly to you.

Forestry wear parts

Saw teeth, blades, chains, and delimiting knives are key to maximizing performance and efficiency in the woods. John Deere has a full line of quality saw products. For high-impact jobs, choose tools made from heat-treated steel. For abrasive conditions, we offer carbide-tipped tools. And for wheeled and tracked feller bunchers, Extended Life Saw Teeth are also available.

John Deere Reman forestry parts

Minimize downtime for a fraction of the cost of new components. John Deere Reman offers a full line of transmissions, hydraulic pumps and motors, engines, and fuel parts for your forestry machine. These components are remanufactured to OEM specifications using original OEM parts, fully tested, and backed by a one-year/unlimited-hour warranty.

Undercarriage solutions

Choose from standard, Extended Life, or Maximum Life undercarriages to match your application. Your dealer can help you choose the one that's right for you.

Genuine John Deere parts and fluids

Oils, coolant, filters, batteries, hydraulic hoses, and grease available from your Deere dealer are specially formulated to maximize machine uptime and performance.

*Same-day shipping is contingent on carrier availability and time of order.



#1 IN THE WOODS

JohnDeere.com/OneInTheWoods



JOHN DEERE

DO YOU STILL CALL IN THE CAVALRY IF THEY'RE ALREADY EN ROUTE?

Filling a fleet with rugged machines is just one step to winning in the woods. There's the hustle of experienced technicians. Having parts at the ready. Or leveraging time-saving tools from cutting-edge technologies. Your local John Deere dealer is always near for support, helping you to keep timber moving, and quotas filling.

